

Recombinant Human Cysteine-rich Protein 2, His-tagged

Cat. No. CRIP2-3051H Lot. No. (See product label)

SPECIFICATION

Product Overview	Recombinant Human CRIP2 was produced in <i>E.coli</i> with a His tag at N-terminus. MW = 22493 Da (1-208 aa).
Species	Human
Source	E.coli
Protein Length	1-208 a.a.
Form	10 mM Tris. pH 8.0. 0.002% NaN ₃ . 3mM NaCl. 2.5mM Imidazole.
Purity	95%.
Applications	MS. SDS.

GENE INFORMATION

Gene Name	CRIP2 cysteine-rich protein 2 [Homo sapiens]
Synonyms	CRIP2; cysteine-rich protein 2; CRIP; CRP2; ESP1; cysteine-rich protein 2; CRP-2; OTTHUMP00000218028; Cystein-rich intestinal protein; Protein ESP1
Gene ID	1397
mRNA Refseq	NM_001312

 Tel: 1-631-559-9269 1-516-512-3133

 Email: info@creative-biomart.com  Fax: 1-631-938-8127

 45-1 Ramsey Road, Shirley, NY 11967, USA

Protein Refseq NP_001303

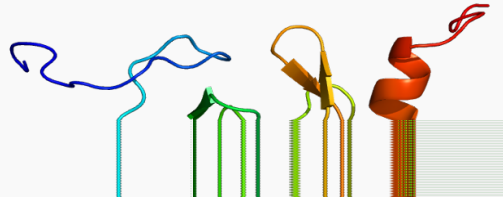
MIM 601183

UniProt ID P52943

Chromosome Location 14q32.3

Function metal ion binding; zinc ion binding

PDB rendering based on 2cu8.



 Tel: 1-631-559-9269 1-516-512-3133

 Email: info@creative-biomart.com  Fax: 1-631-938-8127

 45-1 Ramsey Road, Shirley, NY 11967, USA