

Recombinant Human CRIP3 Protein, GST-tagged

Cat. No. CRIP3-1878H Lot. No. (See product label)

SPECIFICATION

Product Overview	Human CRIP3 full-length ORF (AAI48847.1, 1 a.a. - 204 a.a.) recombinant protein with GST-tag at N-terminal.
Species	Human
Source	Wheat Germ
Description	CRIP3 (Cysteine Rich Protein 3) is a Protein Coding gene. An important paralog of this gene is CRIP2.
Molecular Mass	49.39 kDa
AA Sequence	MSWTCPRCQQPVFFAEKVSSLGKNWHRFCLKCERCHSILSPGGHAEHNGRPYCH KPCYGALFGPRGVNIGGVGSYLYNPPTPSPGCTTPLSPSSFSPRPRTGLPQGKKS PPHMKTFTGETSLCPGCGEPVYFAEKVMSLGRNWHRPCLRCQRCHKTLTAGSHAE HDGVPYCHVPCYGYLFGPKGVNIGDVGCIYDPVKIKFK
Applications	Enzyme-linked Immunoabsorbent Assay Western Blot (Recombinant protein) Antibody Production Protein Array
Notes	Best use within three months from the date of receipt of this protein.
Storage	Store at -80 centigrade. Aliquot to avoid repeated freezing and thawing.

 Tel: 1-631-559-9269 1-516-512-3133

 Email: info@creative-biomart.com  Fax: 1-631-938-8127

 45-1 Ramsey Road, Shirley, NY 11967, USA

Storage Buffer 50 mM Tris-HCl, 10 mM reduced Glutathione, pH=8.0 in the elution buffer.

GENE INFORMATION

Gene Name CRIP3 cysteine-rich protein 3 [Homo sapiens]

Official Symbol CRIP3

Synonyms CRIP3; cysteine-rich protein 3; bA480N24.2; TLP; TLP A; CRP-3; h6LIMo; thymus LIM protein TLP-A; chromosome 6 LIM domain only protein; TLP-A;

Gene ID 401262

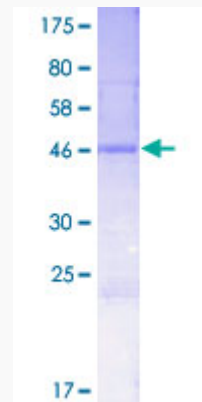
mRNA Refseq NM_206922

Protein Refseq NP_996805

UniProt ID Q6Q6R5

Quality Control

Testing:



12.5% SDS-PAGE Stained with Coomassie Blue.

 Tel: 1-631-559-9269 1-516-512-3133

 Email: info@creative-biomart.com  Fax: 1-631-938-8127

 45-1 Ramsey Road, Shirley, NY 11967, USA