

## Recombinant Human CRIPT Protein, GST-tagged

Cat. No. CRIPT-1879H Lot. No. (See product label)

### SPECIFICATION

<b>Product Overview</b>	Human CRIPT full-length ORF ( NP_054890.1, 1 a.a. - 101 a.a.) recombinant protein with GST-tag at N-terminal.
<b>Species</b>	Human
<b>Source</b>	Wheat Germ
<b>Description</b>	This gene encodes a protein that binds to the PDZ3 peptide recognition domain. The encoded protein may modulates protein interactions with the cytoskeleton. A mutation in this gene resulted in short stature with microcephaly and distinctive facies. [provided by RefSeq, Jun 2014]
<b>Molecular Mass</b>	37.6 kDa
<b>AA Sequence</b>	MVCEKCEKLLGTVITPDTWKDGARNTTESGGRKLNENKALTSKKARFDPYGKNKFS TCRICKSSVHQPGSHYCQGCAYKKGICAMCGKKVLDTKNYKQTSV
<b>Applications</b>	Enzyme-linked Immunoabsorbent Assay Western Blot (Recombinant protein) Antibody Production Protein Array
<b>Notes</b>	Best use within three months from the date of receipt of this protein.
<b>Storage</b>	Store at -80 centigrade. Aliquot to avoid repeated freezing and thawing.

 Tel: 1-631-559-9269 1-516-512-3133

 Email: [info@creative-biomart.com](mailto:info@creative-biomart.com)  Fax: 1-631-938-8127

 45-1 Ramsey Road, Shirley, NY 11967, USA

**Storage Buffer** 50 mM Tris-HCl, 10 mM reduced Glutathione, pH=8.0 in the elution buffer.

## GENE INFORMATION

**Gene Name** [CRIPT cysteine-rich PDZ-binding protein \[ Homo sapiens \]](#)

**Official Symbol** [CRIPT](#)

**Synonyms** CRIPT; cysteine-rich PDZ-binding protein; HSPC139; postsynaptic protein CRIPT; cysteine-rich interactor of PDZ3; cysteine-rich interactor of PDZ three;

**Gene ID** [9419](#)

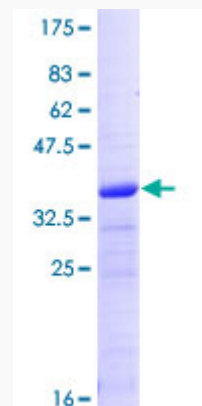
**mRNA Refseq** [NM\\_014171](#)

**Protein Refseq** [NP\\_054890](#)

**MIM** [604594](#)

**UniProt ID** [Q9P021](#)

**Quality Control Testing:**



 Tel: 1-631-559-9269 1-516-512-3133

 Email: [info@creative-biomart.com](mailto:info@creative-biomart.com)  Fax: 1-631-938-8127

 45-1 Ramsey Road, Shirley, NY 11967, USA



12.5% SDS-PAGE Stained with Coomassie Blue.

 Tel: 1-631-559-9269 1-516-512-3133

 Email: [info@creative-biomart.com](mailto:info@creative-biomart.com)  Fax: 1-631-938-8127

 45-1 Ramsey Road, Shirley, NY 11967, USA