

Recombinant Human CRISP2 protein, His & T7-tagged

Cat. No. CRISP2-1442H Lot. No. (See product label)

SPECIFICATION

Product Overview	Recombinant Human CRISP2 aa. (Lys22~Asn240 (Accession # P16562) fused with N-terminal His & T7 tag was produced in E. coli cells.
Species	Human
Source	E.coli
ProteinLength	Lys22~Asn240
Form	Freeze-dried powder
Molecular Mass	Predicted Molecular Mass: 28.5kDa.
Endotoxin	<1.0EU per 1g (determined by the LAL method)
Purity	>95%
Characteristic	The isoelectric point is 6.1.
Applications	SDS-PAGE; WB; ELISA; IP.
Stability	The thermal stability is described by the loss rate of the target protein. The loss rate was determined by accelerated thermal degradation test, that is, incubate the protein at 37°C for 48h, and no obvious degradation and precipitation were observed. (Referring from China Biological Products Standard, which was calculated by the

 Tel: 1-631-559-9269 1-516-512-3133

 Email: info@creative-biomart.com  Fax: 1-631-938-8127

 45-1 Ramsey Road, Shirley, NY 11967, USA

Arrhenius equation.) The loss of this protein is less than 5% within the expiration date under appropriate storage condition.

Storage

Avoid repeated freeze/thaw cycles. Store at 2-8°C for one month. Aliquot and store at -80°C for 12 months.

Storage buffer

Supplied as lyophilized form in PBS, pH7.4, containing 5% trehalose, 0.01% sarcosyl.

Reconstitution

Reconstitute in sterile PBS, pH7.2-pH7.4.

GENE INFORMATION

Gene Name

CRISP2 cysteine rich secretory protein 2 [Homo sapiens (human)]

Official Symbol

CRISP2

Synonyms

CRISP2; cysteine rich secretory protein 2; CT36; TPX1; TSP1; GAPDL5; CRISP-2; cysteine-rich secretory protein 2; cancer/testis antigen 36; glyceraldehyde-3-phosphate dehydrogenase-like 5; testicular tissue protein Li 43; testis specific protein 1 (probe H4-1 p3-1); testis-specific protein TPX-1

Gene ID

7180

mRNA Refseq

NM_001142407.2

Protein Refseq

NP_001135879.1

UniProt ID

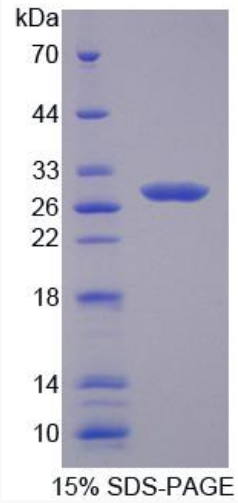
P16562

 Tel: 1-631-559-9269 1-516-512-3133

 Email: info@creative-biomart.com  Fax: 1-631-938-8127

 45-1 Ramsey Road, Shirley, NY 11967, USA

SDS-PAGE



 Tel: 1-631-559-9269 1-516-512-3133

 Email: info@creative-biomart.com  Fax: 1-631-938-8127

 45-1 Ramsey Road, Shirley, NY 11967, USA