

Recombinant Human CRISP2 Protein, GST-tagged

Cat. No. CRISP2-1882H **Lot. No.** (See product label)

SPECIFICATION

Product Overview	Human CRISP2 partial ORF (NP_003287, 154 a.a. - 243 a.a.) recombinant protein with GST-tag at N-terminal.
Species	Human
Source	Wheat Germ
Description	CRISP2 (Cysteine Rich Secretory Protein 2) is a Protein Coding gene. Diseases associated with CRISP2 include Cholecystolithiasis and Orchitis. An important paralog of this gene is CRISP3.
Molecular Mass	35.64 kDa
AA Sequence	YCPNQDSLKYYYYVCQYCPAGNNMNRKNTPTYQQGTPCAGCPDDCDKGLCTNSCQY QDLLSNCDLKNNTAGCEHELLKEKCKATCLCENKIY
Applications	Enzyme-linked Immunoabsorbent Assay Western Blot (Recombinant protein) Antibody Production Protein Array
Notes	Best use within three months from the date of receipt of this protein.
Storage	Store at -80 centigrade. Aliquot to avoid repeated freezing and thawing.

 Tel: 1-631-559-9269 1-516-512-3133

 Email: info@creative-biomart.com  Fax: 1-631-938-8127

 45-1 Ramsey Road, Shirley, NY 11967, USA

Storage Buffer 50 mM Tris-HCl, 10 mM reduced Glutathione, pH=8.0 in the elution buffer.

GENE INFORMATION

Gene Name CRISP2 cysteine-rich secretory protein 2 [Homo sapiens]

Official Symbol CRISP2

Synonyms CRISP2; cysteine-rich secretory protein 2; GAPDL5, testis specific protein 1 (probe H4 1 p3 1) , TPX1; cancer/testis antigen 36; CRISP 2; CT36; testis-specific protein TPX-1; testis specific protein 1 (probe H4-1 p3-1); glyceraldehyde-3-phosphate dehydrogenase-like 5; TPX1; TSP1; GAPDL5; CRISP-2; MGC111136;

Gene ID 7180

mRNA Refseq NM_001142407

Protein Refseq NP_001135879

MIM 187430

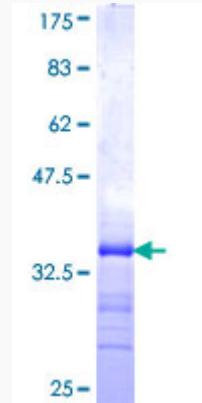
UniProt ID P16562

 Tel: 1-631-559-9269 1-516-512-3133

 Email: info@creative-biomart.com  Fax: 1-631-938-8127

 45-1 Ramsey Road, Shirley, NY 11967, USA

**Quality Control
Testing:**



12.5% SDS-PAGE Stained with Coomassie Blue.

 Tel: 1-631-559-9269 1-516-512-3133

 Email: info@creative-biomart.com  Fax: 1-631-938-8127

 45-1 Ramsey Road, Shirley, NY 11967, USA