

Recombinant Human CRISP2 Protein (Lys22-Asn240), N-His tagged

Cat. No. CRISP2-2213H **Lot. No.** (See product label)

SPECIFICATION

Product Overview	Recombinant human CRISP2 (Lys22-Asn240) fused with N-His tag was expressed in E. coli.
Species	Human
Source	E.coli
ProteinLength	Lys22-Asn240
Form	Lyophilized powder/frozen liquid
Molecular Mass	26.99 kDa
Purity	>90% as determined by SDS-PAGE
Notes	For research use only.
Storage	Use a manual defrost freezer and avoid repeated freeze thaw cycles. Store at 2 to 8 centigrade for one week. Store at -20 to -80 centigrade for twelve months from the date of receipt.
Storage Buffer	0.01M PBS, pH 7.4, 0.02% NLS
Reconstitution	Reconstitute in sterile water for a stock solution.

 Tel: 1-631-559-9269 1-516-512-3133

 Email: info@creative-biomart.com  Fax: 1-631-938-8127

 45-1 Ramsey Road, Shirley, NY 11967, USA

Shipping They are shipped out with dry ice/blue ice unless customers require otherwise.

GENE INFORMATION

Gene Name CRISP2 cysteine-rich secretory protein 2 [Homo sapiens (human)]

Official Symbol CRISP2

Synonyms CRISP2; cysteine-rich secretory protein 2; GAPDL5, testis specific protein 1 (probe H4 1 p3 1), TPX1; cancer/testis antigen 36; CRISP 2; CT36; testis-specific protein TPX-1; testis specific protein 1 (probe H4-1 p3-1); glyceraldehyde-3-phosphate dehydrogenase-like 5; TPX1; TSP1; GAPDL5; CRISP-2; MGC111136;

Gene ID 7180

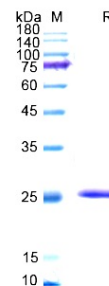
mRNA Refseq NM_001142407

Protein Refseq NP_001135879

MIM 187430

UniProt ID P16562

SDS-PAGE



 Tel: 1-631-559-9269 1-516-512-3133

 Email: info@creative-biomart.com  Fax: 1-631-938-8127

 45-1 Ramsey Road, Shirley, NY 11967, USA