

## Recombinant Human CRK Protein, GST-tagged

**Cat. No.** CRK-1886H    **Lot. No.** (See product label)

### SPECIFICATION

<b>Product Overview</b>	Human CRK full-length ORF ( NP_005197.3, 1 a.a. - 204 a.a.) recombinant protein with GST-tag at N-terminal.
<b>Species</b>	Human
<b>Source</b>	Wheat Germ
<b>Description</b>	This gene encodes a member of an adapter protein family that binds to several tyrosine-phosphorylated proteins. The product of this gene has several SH2 and SH3 domains (src-homology domains) and is involved in several signaling pathways, recruiting cytoplasmic proteins in the vicinity of tyrosine kinase through SH2-phosphotyrosine interaction. The N-terminal SH2 domain of this protein functions as a positive regulator of transformation whereas the C-terminal SH3 domain functions as a negative regulator of transformation. Two alternative transcripts encoding different isoforms with distinct biological activity have been described. [provided by RefSeq, Jul 2008]
<b>Molecular Mass</b>	49.3 kDa
<b>AA Sequence</b>	MAGNFDSEERSSWYWGRLSRQEAVALLQGQRHGVFLVRDSSTSPGDYVLSVSEN SRVSHYIINSSGPRPPVPPSPAQPPPGVSPSRLRIGDQEFDSLPALEFYKIHYLDTT TLIEPVSRSRQGSVILRQEEAEYVRALDFDFNGNDEEDLPFKKGDILRIRDKPEEQW WNAEDSEGKRGMPVPYPYVEKYRPASASVSALIGGR
<b>Applications</b>	Enzyme-linked Immunoabsorbent Assay

 Tel: 1-631-559-9269    1-516-512-3133

 Email: [info@creative-biomart.com](mailto:info@creative-biomart.com)     Fax: 1-631-938-8127

 45-1 Ramsey Road, Shirley, NY 11967, USA

Western Blot (Recombinant protein)  
 Antibody Production  
 Protein Array

<b>Notes</b>	Best use within three months from the date of receipt of this protein.
<b>Storage</b>	Store at -80 centigrade. Aliquot to avoid repeated freezing and thawing.
<b>Storage Buffer</b>	50 mM Tris-HCl, 10 mM reduced Glutathione, pH=8.0 in the elution buffer.

## GENE INFORMATION

<b>Gene Name</b>	CRK CRK proto-oncogene, adaptor protein [ Homo sapiens (human) ]
<b>Official Symbol</b>	CRK
<b>Synonyms</b>	CRK; CRK CRK proto-oncogene, adaptor protein; v-crk sarcoma virus CT10 oncogene homolog (avian); v crk avian sarcoma virus CT10 oncogene homolog; adapter molecule crk; proto-oncogene c-Crk; p38; CRKII; FLJ38130;
<b>Gene ID</b>	1398
<b>mRNA Refseq</b>	NM_005206
<b>Protein Refseq</b>	NP_005197
<b>MIM</b>	164762
<b>UniProt ID</b>	P46108

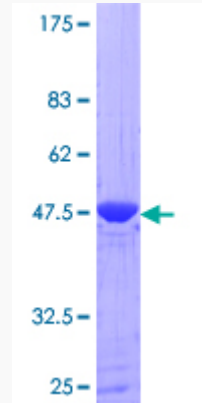
 Tel: 1-631-559-9269 1-516-512-3133

 Email: [info@creative-biomart.com](mailto:info@creative-biomart.com)  Fax: 1-631-938-8127

 45-1 Ramsey Road, Shirley, NY 11967, USA

**Quality Control**

**Testing:**



12.5% SDS-PAGE Stained with Coomassie Blue.

 Tel: 1-631-559-9269 1-516-512-3133

 Email: [info@creative-biomart.com](mailto:info@creative-biomart.com)  Fax: 1-631-938-8127

 45-1 Ramsey Road, Shirley, NY 11967, USA