

Recombinant Human CRK Protein, Myc/DDK-tagged, C13 and N15-labeled

Cat. No. CRK-5279H Lot. No. (See product label)

SPECIFICATION

Product Overview

CRK MS Standard C13 and N15-labeled recombinant protein (NP_005197) with a C-terminal MYC/DDK tag, was expressed in HEK293 cells.

Species

Human

Source

HEK293

Description

This gene encodes a member of an adapter protein family that binds to several tyrosine-phosphorylated proteins. The product of this gene has several SH2 and SH3 domains (src-homology domains) and is involved in several signaling pathways, recruiting cytoplasmic proteins in the vicinity of tyrosine kinase through SH2-phosphotyrosine interaction. The N-terminal SH2 domain of this protein functions as a positive regulator of transformation whereas the C-terminal SH3 domain functions as a negative regulator of transformation. Two alternative transcripts encoding different isoforms with distinct biological activity have been described.

Molecular Mass

22.9 kDa

AA Sequence

MAGNFDSEERSSWYWGRLSRQEAVALLQGQRHGVFLVRDSSTSPGDYVLSVSEN
SRVSHYIINSSGPRPPVPPSPAQPPPGVSPSRLRIGDQEFDSLPALEFYKIHLYLDTT
TLIEPVSRSRQGSGVILRQEEAEYVRALDFDFNGNDEEDLPFKKGDILRIRDKPEEQW
WNAEDSEGKRGMPVPYPYVEKYRPASASVSALIGGRTRTRPLEQKLISEEDLAANDIL
DYKDDDDKV

Tel: 1-631-559-9269 1-516-512-3133

Email: info@creative-biomart.com Fax: 1-631-938-8127

45-1 Ramsey Road, Shirley, NY 11967, USA

Purity	> 80% as determined by SDS-PAGE and Coomassie blue staining
Stability	Stable for 3 months from receipt of products under proper storage and handling conditions.
Storage	Store at -80 centigrade. Avoid repeated freeze-thaw cycles.
Concentration	50 µg/mL as determined by BCA
Storage Buffer	100 mM glycine, 25 mM Tris-HCl, pH 7.3.

GENE INFORMATION

Gene Name	CRK CRK proto-oncogene, adaptor protein [Homo sapiens (human)]
Official Symbol	CRK
Synonyms	CRK; v-crk sarcoma virus CT10 oncogene homolog (avian); v crk avian sarcoma virus CT10 oncogene homolog; adapter molecule crk; proto-oncogene c-Crk; p38; CRKII; FLJ38130;
Gene ID	1398
mRNA Refseq	NM_005206
Protein Refseq	NP_005197
MIM	164762
UniProt ID	P46108

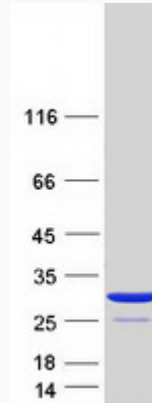
 Tel: 1-631-559-9269 1-516-512-3133

 Email: info@creative-biomart.com  Fax: 1-631-938-8127

 45-1 Ramsey Road, Shirley, NY 11967, USA



SDS-PAGE



Tel: 1-631-559-9269 1-516-512-3133

Email: info@creative-biomart.com Fax: 1-631-938-8127

45-1 Ramsey Road, Shirley, NY 11967, USA