

Recombinant Human CRKL Protein, GST-tagged

Cat. No. CRKL-1889H Lot. No. (See product label)

SPECIFICATION

Product Overview	Human CRKL full-length ORF (NP_005198.1, 1 a.a. - 303 a.a.) recombinant protein with GST-tag at N-terminal.
Species	Human
Source	Wheat Germ
Description	This gene encodes a protein kinase containing SH2 and SH3 (src homology) domains which has been shown to activate the RAS and JUN kinase signaling pathways and transform fibroblasts in a RAS-dependent fashion. It is a substrate of the BCR-ABL tyrosine kinase, plays a role in fibroblast transformation by BCR-ABL, and may be oncogenic.[provided by RefSeq, Jan 2009]
Molecular Mass	60.2 kDa
AA Sequence	MSSARFDSSDRSAWYMGPVSRQEAQTRLQGQRHGMFLVRDSSTCPGDYVLSVSE NSRVSHYIINSLPNRRFKIGDQEFDHLPALLEFYKIHLYLDTTTLIEPAPRYPSPPMGSV SAPNLPTAEDNLEYVRTLYDFPGNDAEDLPFKKGEILVIIKPEEQWWSARNKDGRV GMIPVPYVEKLVRRSSPHGKHGNRNSNSYGIPEPAHAYAQPQTTPPLPAVSGSPGAAI TPLPSTQNGPVFAKAIQKRVP CAYDKTALALEVGDIVKVTRMNINGQWEGEVNGRK GLFPFTHVKIFDPQNPDENE
Applications	Enzyme-linked Immunoabsorbent Assay Western Blot (Recombinant protein) Antibody Production

 Tel: 1-631-559-9269 1-516-512-3133

 Email: info@creative-biomart.com  Fax: 1-631-938-8127

 45-1 Ramsey Road, Shirley, NY 11967, USA

Protein Array

Notes	Best use within three months from the date of receipt of this protein.
Storage	Store at -80 centigrade. Aliquot to avoid repeated freezing and thawing.
Storage Buffer	50 mM Tris-HCl, 10 mM reduced Glutathione, pH=8.0 in the elution buffer.

GENE INFORMATION

Gene Name	CRKL CRK like proto-oncogene, adaptor protein [Homo sapiens (human)]
Official Symbol	CRKL
Synonyms	CRKL; CRK like proto-oncogene, adaptor protein; v-crk sarcoma virus CT10 oncogene homolog (avian)-like; v crk avian sarcoma virus CT10 oncogene homolog like; crk-like protein;
Gene ID	1399
mRNA Refseq	NM_005207
Protein Refseq	NP_005198
MIM	602007
UniProt ID	P46109

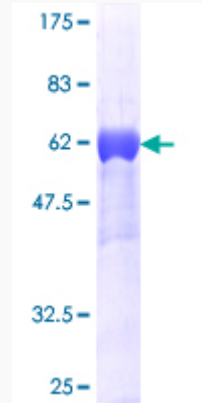
 Tel: 1-631-559-9269 1-516-512-3133

 Email: info@creative-biomart.com  Fax: 1-631-938-8127

 45-1 Ramsey Road, Shirley, NY 11967, USA

Quality Control

Testing:



12.5% SDS-PAGE Stained with Coomassie Blue.

 Tel: 1-631-559-9269 1-516-512-3133

 Email: info@creative-biomart.com  Fax: 1-631-938-8127

 45-1 Ramsey Road, Shirley, NY 11967, USA