

# Recombinant Human CRKL Protein, Myc/DDK-tagged, C13 and N15-labeled

**Cat. No.** CRKL-6088H    **Lot. No.** (See product label)

## SPECIFICATION

<b>Product Overview</b>	CRKL MS Standard C13 and N15-labeled recombinant protein (NP_005198) with a C-terminal MYC/DDK tag, was expressed in HEK293 cells.
<b>Species</b>	Human
<b>Source</b>	HEK293
<b>Description</b>	This gene encodes a protein kinase containing SH2 and SH3 (src homology) domains which has been shown to activate the RAS and JUN kinase signaling pathways and transform fibroblasts in a RAS-dependent fashion. It is a substrate of the BCR-ABL tyrosine kinase, plays a role in fibroblast transformation by BCR-ABL, and may be oncogenic.
<b>Molecular Mass</b>	33.6 kDa
<b>AA Sequence</b>	MSSARFDSSDRSAWYMGPVSRQEAQTRLQGQRHGMFLVRDSSTCPGDYVLSVSE NSRVSHYIINSLPNRRFKIGDQEFDHLPALLEFYKIHLYLDTTTLIEPAPRYPSPPMGSV SAPNLPTAEDNLEYVRTLYDFPGNDAEDLPFKKGEILVIIKPEEQWWSARNKDGRV GMIPVPYVEKLVRRSSPHGKHGNRNSNSYGIPEPAHAYAQPQTTPPLPAVSGSPGAAI TPLPSTQNGPVFAKAIQKRVPDAYDKTALALEVGDIVKVTRMNINGQWEGEVNGRK GLFPFTHVKIFDPQNPDENETRTRPLEQKLISEEDLAANDILDYKDDDDKV
<b>Purity</b>	> 80% as determined by SDS-PAGE and Coomassie blue staining

 Tel: 1-631-559-9269    1-516-512-3133

 Email: [info@creative-biomart.com](mailto:info@creative-biomart.com)     Fax: 1-631-938-8127

 45-1 Ramsey Road, Shirley, NY 11967, USA

<b>Stability</b>	Stable for 3 months from receipt of products under proper storage and handling conditions.
<b>Storage</b>	Store at -80 centigrade. Avoid repeated freeze-thaw cycles.
<b>Concentration</b>	50 µg/mL as determined by BCA
<b>Storage Buffer</b>	100 mM glycine, 25 mM Tris-HCl, pH 7.3.

## GENE INFORMATION

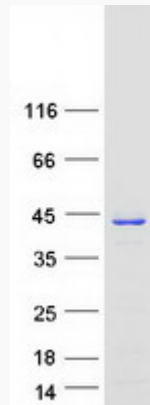
<b>Gene Name</b>	CRKL CRK like proto-oncogene, adaptor protein [ Homo sapiens (human) ]
<b>Official Symbol</b>	CRKL
<b>Synonyms</b>	CRKL; v-crkl sarcoma virus CT10 oncogene homolog (avian)-like; v crk avian sarcoma virus CT10 oncogene homolog like; crk-like protein;
<b>Gene ID</b>	1399
<b>mRNA Refseq</b>	NM_005207
<b>Protein Refseq</b>	NP_005198
<b>MIM</b>	602007
<b>UniProt ID</b>	P46109

 Tel: 1-631-559-9269 1-516-512-3133

 Email: [info@creative-biomart.com](mailto:info@creative-biomart.com)  Fax: 1-631-938-8127

 45-1 Ramsey Road, Shirley, NY 11967, USA

SDS-PAGE



 Tel: 1-631-559-9269 1-516-512-3133

 Email: [info@creative-biomart.com](mailto:info@creative-biomart.com)  Fax: 1-631-938-8127

 45-1 Ramsey Road, Shirley, NY 11967, USA