

## Recombinant Human CRLF1, GST-tagged

**Cat. No.** CRLF1-319H    **Lot. No.** (See product label)

### SPECIFICATION

<b>Product Overview</b>	Recombinant Human CRLF1 encoding Human CRLF1 full-length ORF ( NP_004741.1, 1 aa - 422 aa), fused with GST-tag at N-terminal, was expressed in Wheat germ.
<b>Species</b>	Human
<b>Source</b>	Wheat Germ
<b>Description</b>	This gene encodes a member of the cytokine type I receptor family. The protein forms a secreted complex with cardiotrophin-like cytokine factor 1 and acts on cells expressing ciliary neurotrophic factor receptors. The complex can promote survival of neuronal cells. Mutations in this gene result in Crisponi syndrome and cold-induced sweating syndrome.
<b>Molecular Mass</b>	72.7 kDa
<b>AA Sequence</b>	MPAGRRGPAAQSARRPPPLLPLLLLLCVLGAPRAGSGAHTAVIS PQDPTLLIGSSLLA TCSVHGDPPGATAEGLYWTLNGRRLPPELSRVLNASTLALALANLNGSRQRSGDNL VCHARDGSILAGSCLYVGLPPEKPVNISCWSKNMKDLTCRWTPGAHGETFLHTNYS LKYKLRWYGQDNTCEEYHTVGP HPSCHIPKDLALFTPYEIWVEATNRLGSARSDVLT DILDVVTDDPPPDVHVS RVGGLEDQLSVRWVSP PALKDFLFQAKYQIRYRVEDSVD WKVDDVSNQTS CRLAGLKP GTVYFVQVRCNPF GIYGSKKAGIWSEWSHPTAAST PRSERPGPGGGACEPRGGEPSSGPVRRELKQFLGWLKKHAYCSNLSFRLYDQWR AWMQKSHKTRNQDEGILPSGRRGTARGPAR

 Tel: 1-631-559-9269    1-516-512-3133

 Email: [info@creative-biomart.com](mailto:info@creative-biomart.com)     Fax: 1-631-938-8127

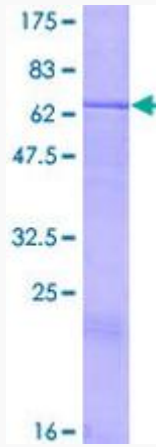
 45-1 Ramsey Road, Shirley, NY 11967, USA

<b>Applications</b>	WB; ELISA
<b>Storage</b>	Store at -80°C. Aliquot to avoid repeated freezing and thawing.
<b>Storage Buffer</b>	50 mM Tris-HCl, 10 mM reduced Glutathione, pH8.0 in the elution buffer.
<b>GENE INFORMATION</b>	
<b>Gene Name</b>	CRLF1 cytokine receptor-like factor 1 [ Homo sapiens ]
<b>Official Symbol</b>	CRLF1
<b>Synonyms</b>	CRLF1; cytokine receptor-like factor 1; CISS; CISS1; CLF; CLF 1; cold induced sweating syndrome; cytokine-like factor 1; class I cytokine receptor; cytokine type 1 receptor CRLP-1; NR6; CLF-1; zcytor5;
<b>Gene ID</b>	9244
<b>mRNA Refseq</b>	NM_004750
<b>Protein Refseq</b>	NP_004741
<b>MIM</b>	604237
<b>UniProt ID</b>	O75462
<b>Chromosome Location</b>	19p12
<b>Function</b>	contributes_to ciliary neurotrophic factor receptor binding; contributes_to cytokine activity; cytokine binding; protein binding; protein heterodimerization activity; receptor activity;

 Tel: 1-631-559-9269 1-516-512-3133

 Email: [info@creative-biomart.com](mailto:info@creative-biomart.com)  Fax: 1-631-938-8127

 45-1 Ramsey Road, Shirley, NY 11967, USA



 Tel: 1-631-559-9269 1-516-512-3133

 Email: [info@creative-biomart.com](mailto:info@creative-biomart.com)  Fax: 1-631-938-8127

 45-1 Ramsey Road, Shirley, NY 11967, USA