

Recombinant Human CRLF1 protein, His&Myc-tagged

Cat. No. CRLF1-5895H Lot. No. (See product label)

SPECIFICATION

| | |
|-------------------------|--|
| Product Overview | Recombinant Human CRLF1 protein(O75462)(38-422aa), fused to N-terminal His tag and C-terminal Myc tag, was expressed in Insect cell. |
| Species | Human |
| Source | Insect Cells |
| ProteinLength | 38-422aa |
| Form | If the delivery form is liquid, the default storage buffer is Tris/PBS-based buffer, 5%-50% glycerol. If the delivery form is lyophilized powder, the buffer before lyophilization is Tris/PBS-based buffer, 6% Trehalose, pH 8.0. |
| Molecular Mass | 46.5 kDa |
| Purity | Greater than 85% as determined by SDS-PAGE. |
| Storage | Store at -20°C/-195°C upon receipt, aliquoting is necessary for mutiple use. Avoid repeated freeze-thaw cycles. |
| Reconstitution | Please reconstitute protein in deionized sterile water to a concentration of 0.1-1.0 mg/mL. We recommend to add 5-50% of glycerol (final concentration) and aliquot for long-term storage at -20°C/-80°C. Our default final concentration of glycerol is 165%. |

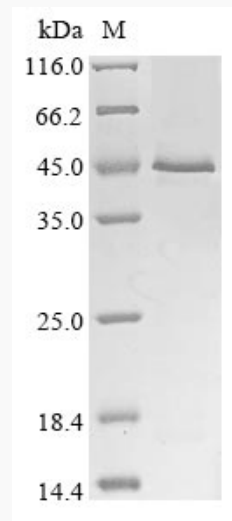
GENE INFORMATION

 Tel: 1-631-559-9269 1-516-512-3133

 Email: info@creative-biomart.com  Fax: 1-631-938-8127

 45-1 Ramsey Road, Shirley, NY 11967, USA

| | |
|------------------------|---|
| Gene Name | CRLF1 cytokine receptor-like factor 1 [Homo sapiens] |
| Official Symbol | CRLF1 |
| Synonyms | CRLF1; cytokine receptor-like factor 1; CISS; CISS1; CLF; CLF 1; cold induced sweating syndrome; cytokine-like factor 1; class I cytokine receptor; cytokine type 1 receptor CRLP-1; NR6; CLF-1; zcytor5; |
| Gene ID | 9244 |
| mRNA Refseq | NM_004750 |
| Protein Refseq | NP_004741 |
| MIM | 604237 |
| UniProt ID | O75462 |

SDS-PAGE


 Tel: 1-631-559-9269 1-516-512-3133

 Email: info@creative-biomart.com  Fax: 1-631-938-8127

 45-1 Ramsey Road, Shirley, NY 11967, USA