

Active Recombinant Human CRLF2 Protein, Fc-tagged, Alexa Fluor® 488 conjugated

Cat. No. CRLF2-29H **Lot. No.** (See product label)

SPECIFICATION

Product Overview Recombinant human Alexa Fluor® 488 conjugated TSLPR (Gly25-Lys231) protein with human IgG1 (Pro100-Lys330) Fc tag at C-terminus was expressed in mouse myeloma cell line.

Species Human

Source NS0

ProteinLength 25-231 a.a.

Description This gene encodes a member of the type I cytokine receptor family. The encoded protein is a receptor for thymic stromal lymphopoietin (TSLP). Together with the interleukin 7 receptor (IL7R), the encoded protein and TSLP activate STAT3, STAT5, and JAK2 pathways, which control processes such as cell proliferation and development of the hematopoietic system. Rearrangement of this gene with immunoglobulin heavy chain gene (IGH) on chromosome 14, or with P2Y purinoceptor 8 gene (P2RY8) on the same X or Y chromosomes is associated with B-progenitor acute lymphoblastic leukemia (ALL) and Down syndrome ALL. Alternatively spliced transcript variants have been found for this gene.

Form Disulfide linked homodimer.
Labeled with Alexa Fluor® 488 via amines
Excitation Wavelength: 488 nm

 Tel: 1-631-559-9269 1-516-512-3133

 Email: info@creative-biomart.com  Fax: 1-631-938-8127

 45-1 Ramsey Road, Shirley, NY 11967, USA

	Emission Wavelength: 515-545 nm
Bio-activity	Measured by flow cytometry for its ability to bind anti-human TSLPR Monoclonal Antibody conjugated beads. The concentration of Recombinant Human TSLPR Fc Chimera Alexa Fluor® 488 that produces 50% of the binding response is 0.10-1.00 µg/mL.
Molecular Mass	51 kDa
N-terminal Sequence Analysis	Gly25
Endotoxin	<1.0 EU/µg of the protein by the LAL method.
Purity	>95%, by SDS-PAGE visualized with Silver Staining and quantitative densitometry by Coomassie® Blue Staining.
Storage	Protect from light. Use a manual defrost freezer and avoid repeated freeze-thaw cycles. 6 months from date of receipt, -20 to -70 centigrade as supplied. 1 month, 2 to 8 centigrade under sterile conditions after opening. 3 months, -20 to -70 centigrade under sterile conditions after opening.
Storage Buffer	Supplied as a 0.2 µm filtered solution in PBS with BSA as a carrier protein.
Shipping	The product is shipped with dry ice or equivalent.
Conjugation	Alexa Fluor 488

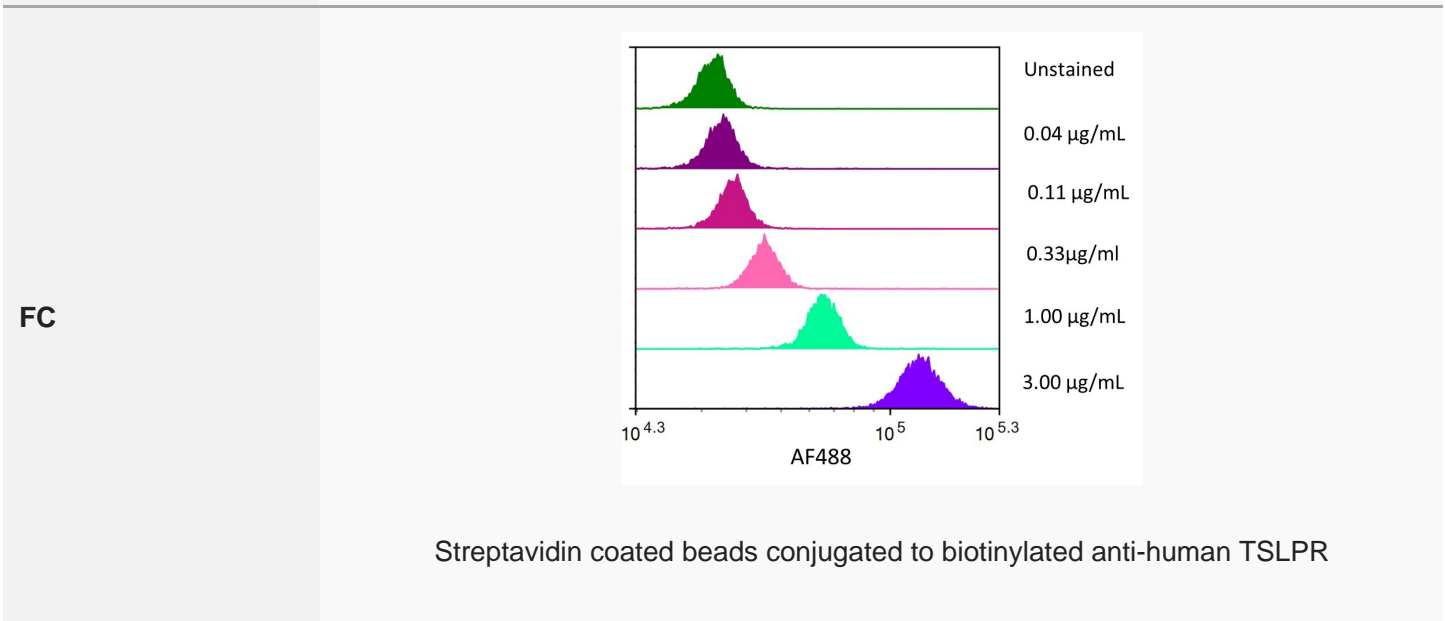
GENE INFORMATION

 Tel: 1-631-559-9269 1-516-512-3133

 Email: info@creative-biomart.com  Fax: 1-631-938-8127

 45-1 Ramsey Road, Shirley, NY 11967, USA

Gene Name	CRLF2 cytokine receptor like factor 2 [Homo sapiens (human)]
Official Symbol	CRLF2
Synonyms	CRLF2; cytokine receptor like factor 2; CRL2; TSLPR; CRLF2Y; cytokine receptor-like factor 2; IL-XR; TSLP receptor; cytokine receptor CRL2 precursor; thymic stromal lymphopietin protein receptor; thymic stromal-derived lymphopietin receptor
Gene ID	64109
mRNA Refseq	NM_022148
Protein Refseq	NP_071431
MIM	400023
UniProt ID	Q9HC73



Tel: 1-631-559-9269 1-516-512-3133

Email: info@creative-biomart.com Fax: 1-631-938-8127

45-1 Ramsey Road, Shirley, NY 11967, USA



Monoclonal Antibody were stained with the indicated concentrations of Recombinant Human TSLPR Fc Chimera Alexa Fluor® 488.

 Tel: 1-631-559-9269 1-516-512-3133

 Email: info@creative-biomart.com  Fax: 1-631-938-8127

 45-1 Ramsey Road, Shirley, NY 11967, USA