

# Active Recombinant Human CRLF2 Protein, Fc-tagged, Alexa Fluor® 647 conjugated

**Cat. No.** CRLF2-30H    **Lot. No.** (See product label)

## SPECIFICATION

**Product Overview**      Recombinant human Alexa Fluor® 647 conjugated TSLPR (Gly25-Lys231) protein with human IgG1 (Pro100-Lys330) Fc tag at C-terminus was expressed in mouse myeloma cell line.

**Species**                      Human

**Source**                        NS0

**ProteinLength**              25-231 a.a.

**Description**                This gene encodes a member of the type I cytokine receptor family. The encoded protein is a receptor for thymic stromal lymphopoietin (TSLP). Together with the interleukin 7 receptor (IL7R), the encoded protein and TSLP activate STAT3, STAT5, and JAK2 pathways, which control processes such as cell proliferation and development of the hematopoietic system. Rearrangement of this gene with immunoglobulin heavy chain gene (IGH) on chromosome 14, or with P2Y purinoceptor 8 gene (P2RY8) on the same X or Y chromosomes is associated with B-progenitor acute lymphoblastic leukemia (ALL) and Down syndrome ALL. Alternatively spliced transcript variants have been found for this gene.

**Form**                            Disulfide linked homodimer.  
 Labeled with Alexa Fluor® 647 via amines.  
 Excitation Wavelength: 650 nm

 Tel: 1-631-559-9269    1-516-512-3133

 Email: [info@creative-biomart.com](mailto:info@creative-biomart.com)     Fax: 1-631-938-8127

 45-1 Ramsey Road, Shirley, NY 11967, USA

	Emission Wavelength: 668 nm
<b>Bio-activity</b>	Measured by flow cytometry for its ability to bind anti-human TSLPR Monoclonal Antibody conjugated beads. The concentration of Recombinant Human TSLPR Fc Chimera Alexa Fluor <sup>®</sup> 647 that produces 50% of the binding response is 5.00-50.0 ng/mL
<b>Molecular Mass</b>	51 kDa
<b>N-terminal Sequence Analysis</b>	Gly25
<b>Endotoxin</b>	<1.0 EU/μg of the protein by the LAL method.
<b>Purity</b>	>95%, by SDS-PAGE visualized with Silver Staining and quantitative densitometry by Coomassie <sup>®</sup> Blue Staining.
<b>Storage</b>	Protect from light. Use a manual defrost freezer and avoid repeated freeze-thaw cycles. 6 months from date of receipt, -20 to -70 centigrade as supplied. 1 month, 2 to 8 centigrade under sterile conditions after opening. 3 months, -20 to -70 centigrade under sterile conditions after opening.
<b>Storage Buffer</b>	Supplied as a 0.2 μm filtered solution in PBS with BSA as a carrier protein.
<b>Shipping</b>	The product is shipped with dry ice or equivalent.
<b>Conjugation</b>	Alexa Fluor 647

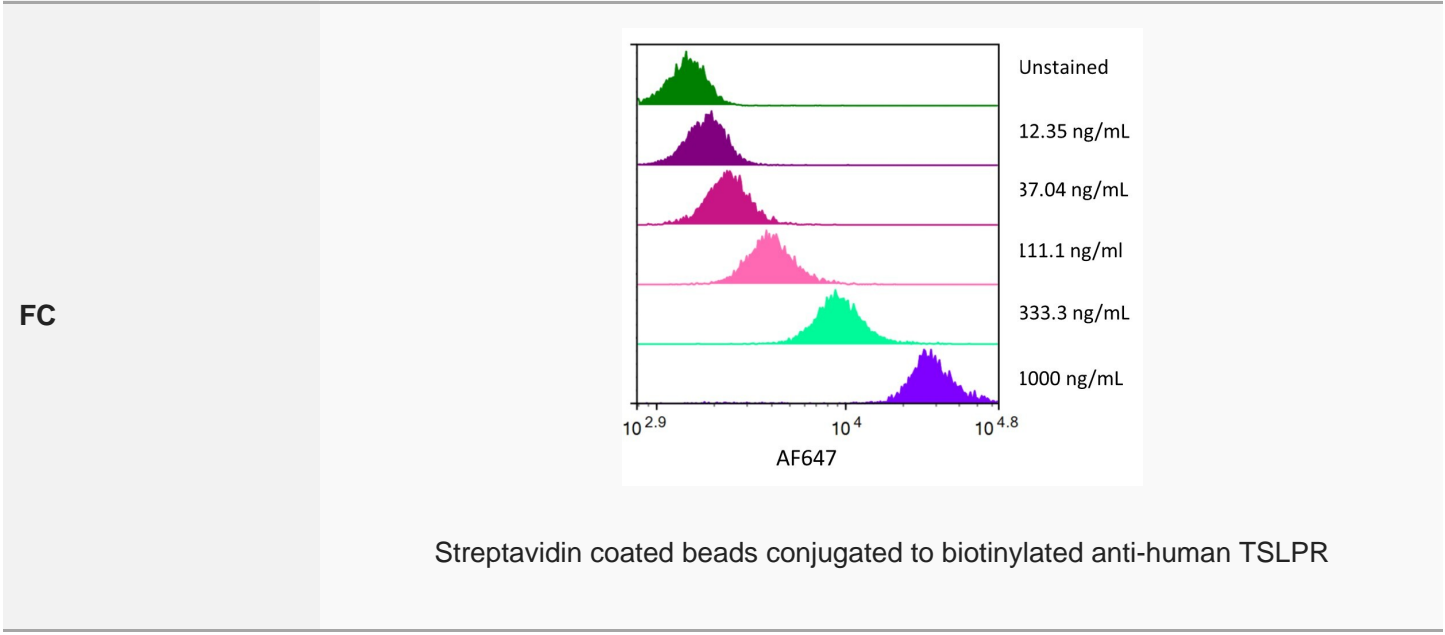
## GENE INFORMATION

 Tel: 1-631-559-9269 1-516-512-3133

 Email: [info@creative-biomart.com](mailto:info@creative-biomart.com)  Fax: 1-631-938-8127

 45-1 Ramsey Road, Shirley, NY 11967, USA

<b>Gene Name</b>	CRLF2 cytokine receptor like factor 2 [ Homo sapiens (human) ]
<b>Official Symbol</b>	CRLF2
<b>Synonyms</b>	CRLF2; cytokine receptor like factor 2; CRL2; TSLPR; CRLF2Y; cytokine receptor-like factor 2; IL-XR; TSLP receptor; cytokine receptor CRL2 precursor; thymic stromal lymphopietin protein receptor; thymic stromal-derived lymphopietin receptor
<b>Gene ID</b>	64109
<b>mRNA Refseq</b>	NM_022148
<b>Protein Refseq</b>	NP_071431
<b>MIM</b>	400023
<b>UniProt ID</b>	Q9HC73



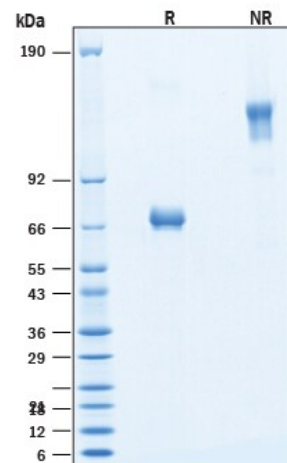
Tel: 1-631-559-9269 1-516-512-3133

Email: [info@creative-biomart.com](mailto:info@creative-biomart.com) Fax: 1-631-938-8127

45-1 Ramsey Road, Shirley, NY 11967, USA

Monoclonal Antibody were stained with the indicated concentrations of Recombinant Human TSLPR Fc Chimera Alexa Fluor® 647.

### SDS-PAGE



2 µg/lane of Recombinant Human TSLPR Fc Chimera Alexa Fluor® 647 Protein was resolved with SDS-PAGE under reducing (R) and nonreducing (NR) conditions and visualized by Coomassie® Blue staining, showing bands at 65-75 kDa and 130-150 kDa, respectively.

Tel: 1-631-559-9269 1-516-512-3133

Email: [info@creative-biomart.com](mailto:info@creative-biomart.com) Fax: 1-631-938-8127

45-1 Ramsey Road, Shirley, NY 11967, USA