

Recombinant Human CRLF2 protein, hFc-tagged

Cat. No. CRLF2-373H **Lot. No.** (See product label)

SPECIFICATION

Product Overview	Recombinant Human CRLF2 protein(Q9HC73-1)(Gly25-Lys231), fused with C-terminal hFc tag, was expressed in HEK293.
Species	Human
Source	HEK293
ProteinLength	Gly25-Lys231
Tag	C-hFc
Form	Lyophilized from 0.22µm filtered solution in PBS (pH 7.4). Normally 5% trehalose is added as protectant before lyophilization.
Bio-activity	Immobilized Human TSLP (R127A, R130A), His Tag at 2ug/ml (100ul/Well). Dose response curve for Human TSLPR, hFc Tag with the EC50 of 4.0ng/ml determined by ELISA.
Molecular Mass	The protein has a predicted MW of 50.8 kDa. Due to glycosylation, the protein migrates to 60-75 kDa based on Tris-Bis PAGE result.
Endotoxin	Less than 1EU per µg by the LAL method.
Purity	> 95% as determined by Tris-Bis PAGE;> 95% as determined by HPLC

 Tel: 1-631-559-9269 1-516-512-3133

 Email: info@creative-biomart.com  Fax: 1-631-938-8127

 45-1 Ramsey Road, Shirley, NY 11967, USA

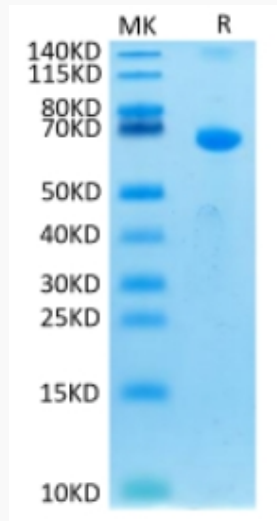
Storage	Reconstituted protein stable at -80°C for 12 months, 4°C for 1 week. Use a manual defrost freezer and avoid repeated freeze-thaw cycles.
Reconstitution	Centrifuge tubes before opening. Reconstituting to a concentration more than 100 µg/ml is recommended. Dissolve the lyophilized protein in distilled water.
GENE INFORMATION	
Gene Name	CRLF2 cytokine receptor-like factor 2 [Homo sapiens]
Official Symbol	CRLF2
Synonyms	CRLF2; cytokine receptor-like factor 2; CRL2; TSLPR; IL-XR; TSLP receptor; P2RY8/CRLF2 fusion; cytokine receptor-like 2; cytokine receptor CRL2 precursor; thymic stromal lymphopoietin receptor; thymic stromal lymphopoietin protein receptor; thymic stromal-derived lymphopoietin receptor; CRLF2Y;
Gene ID	64109
mRNA Refseq	NM_001012288
Protein Refseq	NP_001012288
MIM	300357
UniProt ID	Q9HC73

 Tel: 1-631-559-9269 1-516-512-3133

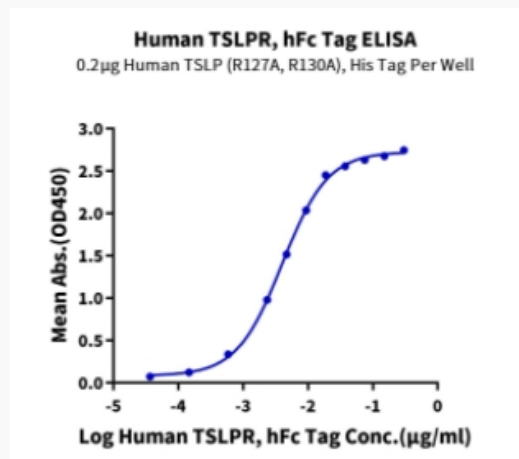
 Email: info@creative-biomart.com  Fax: 1-631-938-8127

 45-1 Ramsey Road, Shirley, NY 11967, USA

Tris-Bis PAGE



ELISA Data



 Tel: 1-631-559-9269 1-516-512-3133

 Email: info@creative-biomart.com  Fax: 1-631-938-8127

 45-1 Ramsey Road, Shirley, NY 11967, USA