

Recombinant Human CRLF2 protein, His-tagged

Cat. No. CRLF2-77H **Lot. No.** (See product label)

SPECIFICATION

Product Overview	Recombinant Human CRLF2 protein(Q9HC73-1)(Gly25-Lys231), fused with C-terminal His tag, was expressed in HEK293.
Species	Human
Source	HEK293
ProteinLength	Gly25-Lys231
Tag	C-His
Form	Supplied as 0.22µm filtered solution in PBS (pH 7.4).
Bio-activity	Immobilized Human TSLP, hFc Tag at 5ug/ml (100ul/well) on the plate. Dose response curve for Human TSLPR, His Tag with the EC50 of 0.32ug/ml determined by ELISA (QC Test).
Molecular Mass	The protein has a predicted MW of 25.1 kDa. Due to glycosylation, the protein migrates to 40-50 kDa based on Tris-Bis PAGE result.
Endotoxin	Less than 1EU per µg by the LAL method.
Purity	> 95% as determined by Tris-Bis PAGE;> 95% as determined by HPLC
Storage	Valid for 12 months from date of receipt when stored at -80°C. Recommend to aliquot

 Tel: 1-631-559-9269 1-516-512-3133

 Email: info@creative-biomart.com  Fax: 1-631-938-8127

 45-1 Ramsey Road, Shirley, NY 11967, USA

the protein into smaller quantities for optimal storage. Please do not repeated freeze-thaw cycles.

Reconstitution

It is recommended that sterile water be added to the vial to prepare a stock solution of 0.2 ug/ul. Centrifuge the vial at 4°C before opening to recover the entire contents.

GENE INFORMATION

Gene Name [CRLF2 cytokine receptor-like factor 2 \[Homo sapiens \]](#)

Official Symbol [CRLF2](#)

Synonyms

CRLF2; cytokine receptor-like factor 2; CRL2; TSLPR; IL-XR; TSLP receptor; P2RY8/CRLF2 fusion; cytokine receptor-like 2; cytokine receptor CRL2 precursor; thymic stromal lymphopoietin receptor; thymic stromal lymphopoietin protein receptor; thymic stromal-derived lymphopoietin receptor; CRLF2Y;

Gene ID [64109](#)

mRNA Refseq [NM_001012288](#)

Protein Refseq [NP_001012288](#)

MIM [300357](#)

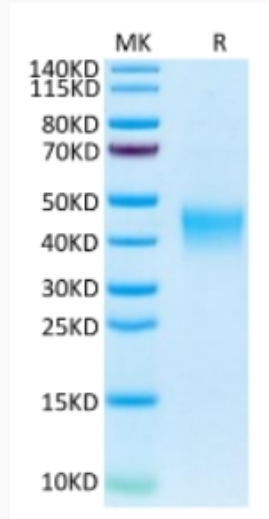
UniProt ID [Q9HC73](#)

 Tel: 1-631-559-9269 1-516-512-3133

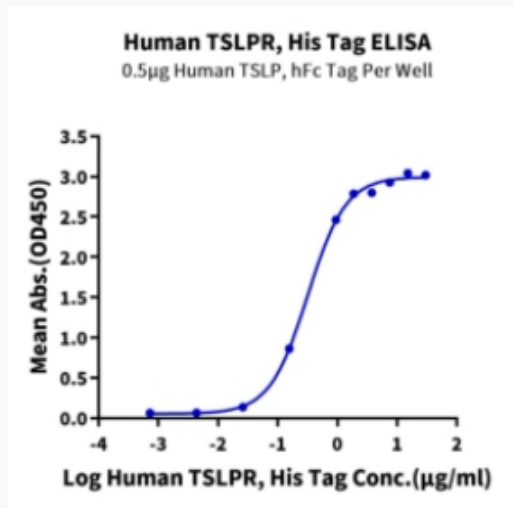
 Email: info@creative-biomart.com  Fax: 1-631-938-8127

 45-1 Ramsey Road, Shirley, NY 11967, USA

Tris-Bis PAGE



ELISA Data



 Tel: 1-631-559-9269 1-516-512-3133

 Email: info@creative-biomart.com  Fax: 1-631-938-8127

 45-1 Ramsey Road, Shirley, NY 11967, USA