

Recombinant Human CRLF2 Protein, His&GST-tagged

Cat. No. CRLF2-845H Lot. No. (See product label)

SPECIFICATION

Product Overview	Recombinant Human CRLF2 Protein (Glu28-Lys231) with His&GST tag was expressed in E. coli.
Species	Human
Source	E.coli
ProteinLength	Glu28-Lys231
Description	<p>This gene encodes a member of the type I cytokine receptor family. The encoded protein is a receptor for thymic stromal lymphopoietin (TSLP). Together with the interleukin 7 receptor (IL7R), the encoded protein and TSLP activate STAT3, STAT5, and JAK2 pathways, which control processes such as cell proliferation and development of the hematopoietic system. Rearrangement of this gene with immunoglobulin heavy chain gene (IGH) on chromosome 14, or with P2Y purinoceptor 8 gene (P2RY8) on the same X or Y chromosomes is associated with B-progenitor acute lymphoblastic leukemia (ALL) and Down syndrome ALL. Alternatively spliced transcript variants have been found for this gene.</p>
Form	Freeze-dried powder
Molecular Mass	Predicted Molecular Mass: 53.8 kDa; Accurate Molecular Mass: 54 kDa
Purity	> 90%

 Tel: 1-631-559-9269 1-516-512-3133

 Email: info@creative-biomart.com  Fax: 1-631-938-8127

 45-1 Ramsey Road, Shirley, NY 11967, USA

Applications	Positive Control; Immunogen; SDS-PAGE; WB.
Stability	The thermal stability is described by the loss rate. The loss rate was determined by accelerated thermal degradation test, that is, incubate the protein at 37 centigrade for 48h, and no obvious degradation and precipitation were observed. The loss rate is less than 5% within the expiration date under appropriate storage condition.
Storage	Avoid repeated freeze/thaw cycles. Store at 2-8 centigrade for one month. Aliquot and store at -80 centigrade for 12 months.
Storage Buffer	PBS, pH7.4, containing 0.01% SKL, 1mM DTT, 5% Trehalose and Proclin300.
Reconstitution	Reconstitute in 20mM Tris, 150mM NaCl (pH8.0) to a concentration of 0.1-1.0 mg/mL. Do not vortex.

GENE INFORMATION

Gene Name	CRLF2 cytokine receptor-like factor 2 [Homo sapiens (human)]
Official Symbol	CRLF2
Synonyms	CRLF2; cytokine receptor-like factor 2; CRL2; TSLPR; IL-XR; TSLP receptor; P2RY8/CRLF2 fusion; cytokine receptor-like 2; cytokine receptor CRL2 precursor; thymic stromal lymphopoietin receptor; thymic stromal lymphopoietin protein receptor; thymic stromal-derived lymphopoietin receptor; CRLF2Y;
Gene ID	64109
mRNA Refseq	NM_001012288
Protein Refseq	NP_001012288

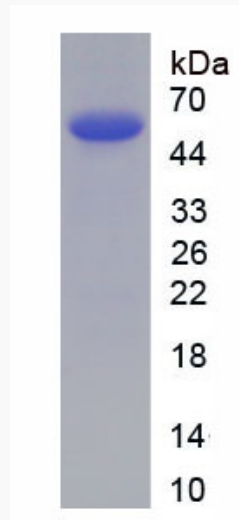
 Tel: 1-631-559-9269 1-516-512-3133

 Email: info@creative-biomart.com  Fax: 1-631-938-8127

 45-1 Ramsey Road, Shirley, NY 11967, USA

MIM 300357

UniProt ID Q9HC73



 Tel: 1-631-559-9269 1-516-512-3133

 Email: info@creative-biomart.com  Fax: 1-631-938-8127

 45-1 Ramsey Road, Shirley, NY 11967, USA