

## Native Diphtheria Toxin CRM197, Mutant [Glu52]

**Cat. No.** CRM197-190    **Lot. No.** (See product label)

### SPECIFICATION

<b>Product Overview</b>	CRM197 was expressed in <i>Corynebacterium diphtheriae</i> , and purified by state-of-art protein purification method such as centrifugation, amonium sulfate precipitation and chromatography, then lyophilized after addition of sucrose. Moisture: <3% by Karl-Fisher
<b>Species</b>	<i>Corynebacterium diphtheriae</i>
<b>Source</b>	<i>Corynebacterium diphtheriae</i>
<b>Description</b>	The Glu52 diphtheria toxin, also known as CRM197 (Cross-reactive materials 197), is a nontoxic mutant of diphtheria toxin, has a mutation in fragment A (a glycine to glutamic acid substitution at position 52) that results in the complete loss of enzymatic activity.
<b>Form</b>	Lyophilized powder (liquid also could be provided)
<b>Molecular Mass</b>	~58 kDa
<b>Sterility</b>	Inoculation/membrane filtration
<b>Endotoxin</b>	<10 EU/μg of protein by LAL method.
<b>Purity</b>	> 90% by SDS-PAGE and HPLC
<b>Storage</b>	Store at -20 centigrade.

 Tel: 1-631-559-9269    1-516-512-3133

 Email: [info@creative-biomart.com](mailto:info@creative-biomart.com)     Fax: 1-631-938-8127

 45-1 Ramsey Road, Shirley, NY 11967, USA

**Concentration** 1~20mg/ml(aq) by BCA or Lowry

**Reconstitution**

Before lyophilization, CRM197(aq) was about 5mg/ml in sterile water with 5% sucrose. Vials containing approximately 5mL of CRM197(aq) were lyophilized. The lyophilized powder can be reconstituted with water or sodium phosphate buffer. We could provide liquid or lyophilized powder.

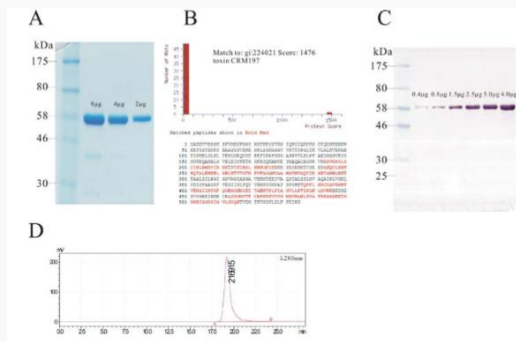


Fig 1 A. Purity analysis of CRM197 by SDS PAGE (10%); B. Identity test of CRM197 by mass spectrometry, Mascot score histogram(top), sequence coverage (bottom); C. Identity test of CRM197 by western blotting; D. Purity analysis of CRM197 by HPLC.

Tel: 1-631-559-9269 1-516-512-3133

Email: [info@creative-biomart.com](mailto:info@creative-biomart.com) Fax: 1-631-938-8127

45-1 Ramsey Road, Shirley, NY 11967, USA