

Recombinant Human Collapsin Response Mediator Protein 1

Cat. No. CRMP1-110H Lot. No. (See product label)

SPECIFICATION

Product Overview	Recombinant Human Collapsin Response Mediator Protein 1 protein expressed in <i>E.coli</i> encodes 448-568 amino acids and has a molecular mass of 39 kDa.
Species	Human
Source	E.coli
Protein Length	448-568 a.a.
Description	Collapsin response mediator proteins (CRMPs) are cytosolic phosphoproteins involved in neuronal differentiation and axonal guidance. CRMP2 was previously shown to mediate the repulsive effect of Sema3A on axons and to participate in axonal specification. The X-ray crystal structure of murine CRMP1 was determined at 2.1 resolution and demonstrates that CRMP1 is a bilobed 'lung-shaped' protein forming a tetrameric assembly.
Formulation	Recombinant Human CRMP-1 protein at 100g/ml in 50mM Tris-Acetate, pH7.5, 1mM EDTA and 20% Glycerol.
Application And Suggested Dilutions	•ELISA •Inhibition Assays •Western Blotting.
Characterization	On SDS-PAGE comassie blue stained gel, the purified recombinant protein shows a band at 39 kDa.

 Tel: 1-631-559-9269 1-516-512-3133

 Email: info@creative-biomart.com  Fax: 1-631-938-8127

 45-1 Ramsey Road, Shirley, NY 11967, USA



Storage & Stability

Store vial at -200°C to -800°C. When stored at the recommended temperature, this protein is stable for 12 months.

GENE INFORMATION

Gene Name

CRMP1 collapsin response mediator protein 1 [Homo sapiens]

Synonyms

CRMP1; collapsin response mediator protein 1; DRP1; DRP-1; DPYSL1; Dihydropyrimidinase-related protein 1; CRMP-1; dihydropyrimidinase related protein-1; dihydropyrimidinase-like 1

Gene ID

1400

mRNA Refseq

NM_001014809

Protein Refseq

NP_001014809

UniProt ID

Q14194

Chromosome Location

4p16.1

MIM

602462

Pathway

Axon guidance

Function

dihydropyrimidinase activity; hydrolase activity, acting on carbon-nitrogen (but not peptide) bonds; protein binding

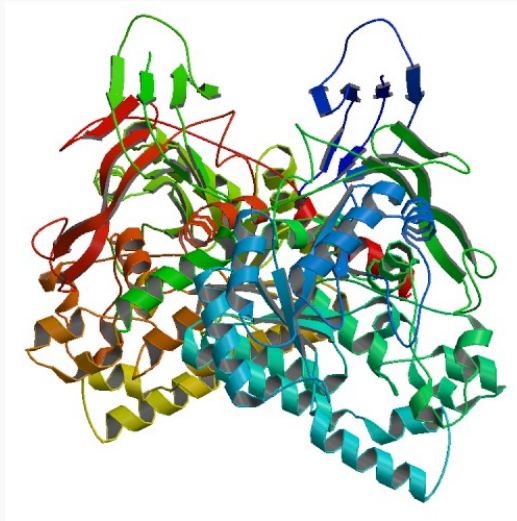
Tel: 1-631-559-9269 1-516-512-3133

Email: info@creative-biomart.com Fax: 1-631-938-8127

45-1 Ramsey Road, Shirley, NY 11967, USA



PDB rendering based
on 1kcx.



☎ Tel: 1-631-559-9269 1-516-512-3133

☎ Email: info@creative-biomart.com ☎ Fax: 1-631-938-8127

☎ 45-1 Ramsey Road, Shirley, NY 11967, USA