

Recombinant Full Length Human CRMP1 Protein

Cat. No. CRMP1-1172H Lot. No. (See product label)

SPECIFICATION

Product Overview Recombinant Human CRMP1 Protein (1-572aa) was expressed in E. coli with N-terminal 6XHis-SUMO-tag.

Species Human

Source E.coli

ProteinLength 1-572 a.a.

Form Tris-based buffer, 50% glycerol.

Molecular Mass 78.2 kDa

AA Sequence

MSYQGKKSIPHITSDRLLIKGGRIINDDQSLYADVLEDGLIKQIGENLIVPGGVKTIEA
 NGRMVIPGGIDVNTYLQKPSQGMTAADDFFQGTRAALVGGTTMIIDHVPEPGSSLL
 TSFEKWHEAADTKSCCDYSLHVDITSWYDGVREELEVLVQDKGVNSFQVYMAYKD
 VYQMSDSQLYEAFITFLKGLGAVILVHAENGDLIAQEQKRILEMGITGPEGHALSRPEE
 LEAEAVFRAITIAGRINCPVYITKVMKSAAADIILARKKGPLVFGPIAASLGTGTHY
 WSKNWAKAAAFVTSPPLSPDPTTPDYLTSLACGDLQVTGSGHCPYSTAQKAVGK
 DNFTLIPEGVNGIEERMTVVWDKAVATGKMDENQFVAVTSTNAAKIFNLYPRKGRIA
 VGSDADVVIWDPDKLKTITAKSHKSAVEYNIFEGMECHGSPLVVISQKIVFEDGNIN
 VNKGMGRFIPRKAFPEHLYQRVKIRNKVFGLQGVSRRMYDGPVYEVPAATPKYATPA
 PSAKSSPSKHQPPPIRNLHQSNSLSGAQIDDNNPRRTGHRIVAPPGGRSNITSLG

Purity Greater than 90% as determined by SDS-PAGE.

 Tel: 1-631-559-9269 1-516-512-3133

 Email: info@creative-biomart.com  Fax: 1-631-938-8127

 45-1 Ramsey Road, Shirley, NY 11967, USA

Storage The shelf life of liquid form is 6 months at -20 centigrade/-80 centigrade. The shelf life of lyophilized form is 12 months at -20 centigrade/-80 centigrade.

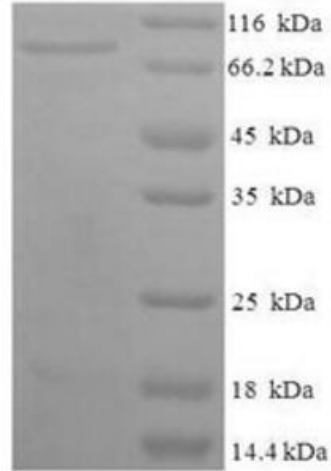
GENE INFORMATION

Gene Name	CRMP1 collapsin response mediator protein 1 [Homo sapiens]
Official Symbol	CRMP1
Synonyms	CRMP1; collapsin response mediator protein 1; DRP1; DRP-1; DPYSL1; Dihydropyrimidinase-related protein 1; CRMP-1; dihydropyrimidinase related protein-1; dihydropyrimidinase-like 1
Gene ID	1400
mRNA Refseq	NM_001014809
Protein Refseq	NP_001014809
MIM	602462
UniProt ID	Q14194

 Tel: 1-631-559-9269 1-516-512-3133

 Email: info@creative-biomart.com  Fax: 1-631-938-8127

 45-1 Ramsey Road, Shirley, NY 11967, USA



Tel: 1-631-559-9269 1-516-512-3133

Email: info@creative-biomart.com Fax: 1-631-938-8127

45-1 Ramsey Road, Shirley, NY 11967, USA