

Recombinant Human collapsin response mediator protein 1 protein, His tagged

Cat. No. CRMP1-12HFL Lot. No. (See product label)

SPECIFICATION

Product Overview	Recombinant human CRMP1 (1-572 aa), fused to His-tag at N-terminus, was expressed in E. coli and purified by using conventional chromatography techniques.
Species	Human
Source	E.coli
ProteinLength	1-572 aa
Description	This gene encodes a member of a family of cytosolic phosphoproteins expressed exclusively in the nervous system. The encoded protein is thought to be a part of the semaphorin signal transduction pathway implicated in semaphorin-induced growth cone collapse during neural development. Alternative splicing results in multiple transcript variants.
Tag	N-His
Form	Liquid
Molecular Mass	64.8 kDa (597aa)
AA Sequence	MGSSHHHHHHSSGLVPRGSHMGSEFMSYQGKKSIPHITSDRLLIKGGRIIINDDQSLY ADVLYEDGLIKQIGENLIVPGGVKTIANGRMVIPGGIDVNTYLQKPSQGMTAADDFF QGTRAALVGGTTMIIDHVVPEPGSSLLTSFEKWHEAADTKSCCDYSLHVDITSWYDG

 Tel: 1-631-559-9269 1-516-512-3133

 Email: info@creative-biomart.com  Fax: 1-631-938-8127

 45-1 Ramsey Road, Shirley, NY 11967, USA

VREELEVLVQDKGVNSFQVYMAKDVYQMSDSLQYEFTFLKGLGAVILVHAENGD
LIAQEQKRILEMGITGPEGHALSRPEELEAEAVFRAITAGRINCPVYITKVMKSAADII
ALARKKGPLVFGPIAASLGTGTHYWSKNWAKAAAFVTSPLSPDPTTPDYLTSL
ACGDLQVTGSGHCPYSTAQKAVGKDNFTLIPEGVNGIEERMTVVWDKAVATGKMD
ENQFVAVTSTNAKIFNLYPRKGRIAVGSDADVVIWDPDKLKTITAKSHKSAVEYNIFE
GMECHGSPLVVISQGKIVFEDGNINVNKGMGRFIPRKAFPEHLYQRVKIRNKVFGLO
GVSRRMYDGPVYEVPAKPYATPAPSAKSSPSKHQPPPIRNLHQS NFSLSGAQIDD
NNPRRTGHRIVAPPGGRSNITSLG

Endotoxin < 1 EU/μg by LAL

Purity > 95% by SDS-PAGE

Applications SDS-PAGE

Notes For research use only. This product is not intended or approved for human, diagnostics or veterinary use.

Storage Can be stored at +2 to +8 centigrade for 1 week. For long term storage, aliquot and store at -20 to -80 centigrade. Avoid repeated freezing and thawing cycles.

Storage Buffer Phosphate-Buffered Saline (pH 7.4) containing 10% glycerol, 1mM DTT, 0.2mM PMSF

Concentration 1 mg/mL (determined by Bradford assay)

Reference
 1. Shih J.-Y. et al. (2001) J. Natl. Cancer Inst. 93:1392-1400.
 2. Chen T.C. et al. (2009) J. Proteome Res. 8:4943-4953.

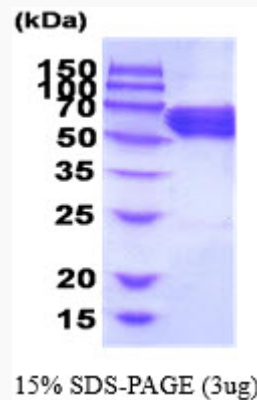
GENE INFORMATION

 Tel: 1-631-559-9269 1-516-512-3133


 Email: info@creative-biomart.com  Fax: 1-631-938-8127

 45-1 Ramsey Road, Shirley, NY 11967, USA

Gene Name	CRMP1 collapsin response mediator protein 1 [Homo sapiens (human)]
Official Symbol	CRMP1
Synonyms	CRMP1; collapsin response mediator protein 1; dihydropyrimidinase-related protein 1; DPYSL1; DRP 1; dihydropyrimidinase-like 1; unc-33-like phosphoprotein 3; dihydropyrimidinase related protein-1; DRP1; DRP-1; CRMP-1; ULIP-3
Gene ID	1400
mRNA Refseq	NM_001313
Protein Refseq	NP_001304
MIM	602462
UniProt ID	Q14194

SDS-PAGE


3 µg by SDS-PAGE under reducing condition and visualized by coomassie blue stain.

 Tel: 1-631-559-9269 1-516-512-3133

 Email: info@creative-biomart.com  Fax: 1-631-938-8127

 45-1 Ramsey Road, Shirley, NY 11967, USA