

Recombinant Human CRMP1 Protein, GST-tagged

Cat. No. CRMP1-1894H Lot. No. (See product label)

SPECIFICATION

Product Overview	Human CRMP1 full-length ORF (BAG53708.1, 1 a.a. - 566 a.a.) recombinant protein with GST tag at N-terminal.
Species	Human
Source	Wheat Germ
Description	This gene encodes a member of a family of cytosolic phosphoproteins expressed exclusively in the nervous system. The encoded protein is thought to be a part of the semaphorin signal transduction pathway implicated in semaphorin-induced growth cone collapse during neural development. Alternative splicing results in multiple transcript variants. [provided by RefSeq, Jul 2008]
Molecular Mass	87.8 kDa
AA Sequence	MRTTGALSDRLIKGGRIINDDQSLYADVLEDGLIKQIGENLIVPGGVKTIEANGRMV IPGGIDVNTYLQKPSQGMATAADFFQGTAAALVGGTTMIIDHVVPEPGSSLLTSFEK WHEAADTKSCCDYSLHVDITSWYDGVREELEVLVQDKGVNSFQVY MAYKD VYQMS DSQLYEAF TFLKGLGAVILVHAENGLIAQE QKRILEMGITGPEGHALSRPEELEAEA VFRAITIAGRINCPVYITKVM SKSAADIALARKKGPLVFG EPIAASLGT DGTHYWSKN WAKAAAFV TSPPLSPDPTTPDYLT SLLACGDLQVTGSGHCPYSTAQKAVGKDNFTLI PEGVNGIEERMTVVWDKAVATGKMDENQFVAVTSTNAAKIFNLYPRKGRIAVGSDA DVVIWDPDKLKTITAKSHKSAVEYNIFEGMECHGSPLVVISQ GKIVFEDGNINVNKGM GRFIPRKAFPEHLYQRVKIRNKV FGLQGVS RGMYPVYEV PATPKYATPAPSAKS

Tel: 1-631-559-9269 1-516-512-3133

Email: info@creative-biomart.com Fax: 1-631-938-8127

45-1 Ramsey Road, Shirley, NY 11967, USA

SPSKHQPPPPIRNLHQSINFSLSGAQIDDNNPRRTGHRIVAPPGGRSNITSLG

Applications

Enzyme-linked Immunoabsorbent Assay
 Western Blot (Recombinant protein)
 Antibody Production
 Protein Array

Notes

Best use within three months from the date of receipt of this protein.

Storage

Store at -80 centigrade. Aliquot to avoid repeated freezing and thawing.

Storage Buffer

50 mM Tris-HCl, 10 mM reduced Glutathione, pH=8.0 in the elution buffer.

GENE INFORMATION

Gene Name

[CRMP1 collapsin response mediator protein 1 \[Homo sapiens \]](#)

Official Symbol

[CRMP1](#)

Synonyms

CRMP1; collapsin response mediator protein 1; dihydropyrimidinase-related protein 1; DPYSL1; DRP 1; dihydropyrimidinase-like 1; unc-33-like phosphoprotein 3; dihydropyrimidinase related protein-1; DRP1; DRP-1; CRMP-1; ULIP-3;

Gene ID

[1400](#)

mRNA Refseq

[NM_001014809](#)

Protein Refseq

[NP_001014809](#)

MIM

[602462](#)

 Tel: 1-631-559-9269 1-516-512-3133

 Email: info@creative-biomart.com  Fax: 1-631-938-8127

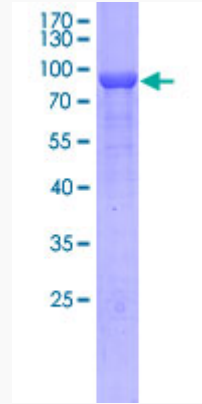
 45-1 Ramsey Road, Shirley, NY 11967, USA

UniProt ID

Q14194

Quality Control

Testing:



12.5% SDS-PAGE Stained with Coomassie Blue

 Tel: 1-631-559-9269 1-516-512-3133

 Email: info@creative-biomart.com  Fax: 1-631-938-8127

 45-1 Ramsey Road, Shirley, NY 11967, USA