

Recombinant Full Length Human CRMP1 Protein, C-Flag-tagged

Cat. No. CRMP1-524HFL **Lot. No.** (See product label)

SPECIFICATION

Product Overview	Recombinant Full Length Human CRMP1 Protein, fused to Flag-tag at C-terminus, was expressed in Mammalian cells.
Species	Human
Source	Mammalian Cells
Description	This gene encodes a member of a family of cytosolic phosphoproteins expressed exclusively in the nervous system. The encoded protein is thought to be a part of the semaphorin signal transduction pathway implicated in semaphorin-induced growth cone collapse during neural development. Alternative splicing results in multiple transcript variants.
Form	25 mM Tris HCl, pH 7.3, 100 mM glycine, 10% glycerol.
Molecular Mass	62 kDa
AA Sequence	MSYQGKKSIPHITSDRLLIKGGRIINDDQSLYADVLEDGLIKQIGENLIVPGGVKTIEA NGRMVIPGGI DVNTYLQKPSQGMTAADDFFQGTRAALVGGTTMIIDHVVPEPGSSL LTSFEKWHEAADTKSCCDYSLHVD ITSWYDGVREELEVLVQDKGVNSFQVYIMAYK DVYQMSDSQLYEAFITFLKGLGAVILVHAENGLIAQEQK RILEMGITGPEGHALSRP EELEAEAVFRAITIAGRINCPVYITKVMSSAADIILARKKGPLVFGPIA ASLGTDGT HYWSKNWAKAAAFVTSPPLSPDPTPDYLTSLACGDLQVTGSGHCPYSTAQKAV GKDNFTL IPEGVNGIEERMTVVWDKAVATGKMDENQFVAVTSTNAAKIFNLYPRKG

 Tel: 1-631-559-9269 1-516-512-3133

 Email: info@creative-biomart.com  Fax: 1-631-938-8127

 45-1 Ramsey Road, Shirley, NY 11967, USA

RIAVGSDADVVIWDPDKLTI TAKSHKSAVEYNIFEGMECHGSPLVVISQGKIVFEDG
 NINVNKGMGRFIPRKAFPEHLYQRVKIRNKVFG LQGVSRGMYDGPVYEVPAATPKYA
 TPAPSAKSSPSKHQPPPIRNLHQSNFSLSGAQIDDNNPRRTGHRIVA
 PPGGRSNITSLGTRTRPLEQKLISEEDLAANDILDYKDDDDKV

Purity > 80% as determined by SDS-PAGE and Coomassie blue staining.

Stability Stable for 12 months from the date of receipt of the product under proper storage and handling conditions. Avoid repeated freeze-thaw cycles.

Storage Store at -80 centigrade.

Concentration >50 ug/mL as determined by microplate BCA method.

Preparation Recombinant protein was captured through anti-DDK affinity column followed by conventional chromatography steps.

Full Length Full L.

GENE INFORMATION

Gene Name [CRMP1 collapsin response mediator protein 1 \[Homo sapiens \(human\) \]](#)

Official Symbol [CRMP1](#)

Synonyms [DRP1](#); [DRP-1](#); [CRMP-1](#); [DPYSL1](#); [ULIP-3](#)

Gene ID [1400](#)

mRNA Refseq [NM_001313.5](#)

 Tel: 1-631-559-9269 1-516-512-3133

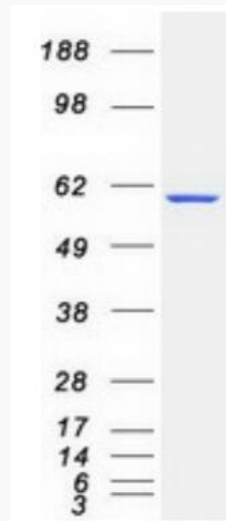
 Email: info@creative-biomart.com  Fax: 1-631-938-8127

 45-1 Ramsey Road, Shirley, NY 11967, USA

Protein Refseq NP_001304.1

MIM 602462

UniProt ID Q14194



Coomassie blue staining of purified CRMP1 protein.

 Tel: 1-631-559-9269 1-516-512-3133

 Email: info@creative-biomart.com  Fax: 1-631-938-8127

 45-1 Ramsey Road, Shirley, NY 11967, USA