

Recombinant Human CRP Protein, MYC/DDK-tagged, C13 and N15-labeled

Cat. No. CRP-008H **Lot. No.** (See product label)

SPECIFICATION

Product Overview	CRP MS Standard C13 and N15-labeled recombinant protein (NP_000558) with a C-terminal MYC/DDK tag, was expressed in HEK293 cells.
Species	Human
Source	HEK293
Description	The protein encoded by this gene belongs to the pentaxin family. It is involved in several host defense related functions based on its ability to recognize foreign pathogens and damaged cells of the host and to initiate their elimination by interacting with humoral and cellular effector systems in the blood. Consequently, the level of this protein in plasma increases greatly during acute phase response to tissue injury, infection, or other inflammatory stimuli.
Molecular Mass	25 kDa
AA Sequence	MEKLLCFLVLTSLSHAFGQTDMSRKAFVFPKESDTSYVSLKAPLTKPLKAFTVCLHFY TELSSTRGYSIFSATKRQDNEILIFWSKDIGYSFTVGGSEILFEVPEVTVAPVHICTS WESASGIVEFWVDGKPRVRKSLKKGTVGAEASIILGQEQDSFGGNFEGSQSLVGD IGNVNMWDFVLPDEINTIYLGPPFSPNVLNWRALKYEVQGEVFTKPKQLWPTRTRPL EQKLISEEDLAANDILDYKDDDDKV
Purity	> 80% as determined by SDS-PAGE and Coomassie blue staining

 Tel: 1-631-559-9269 1-516-512-3133

 Email: info@creative-biomart.com  Fax: 1-631-938-8127

 45-1 Ramsey Road, Shirley, NY 11967, USA

Stability	Stable for 3 months from receipt of products under proper storage and handling conditions.
Storage	Store at -80 centigrade. Avoid repeated freeze-thaw cycles.
Concentration	50 µg/mL as determined by BCA
Storage Buffer	100 mM glycine, 25 mM Tris-HCl, pH 7.3.

GENE INFORMATION

Gene Name	CRP C-reactive protein [Homo sapiens (human)]
Official Symbol	CRP
Synonyms	CRP; C-reactive protein; PTX1; C-reactive protein; C-reactive protein, pentraxin-related; pentraxin 1
Gene ID	1401
mRNA Refseq	NM_000567
Protein Refseq	NP_000558
MIM	123260
UniProt ID	P02741

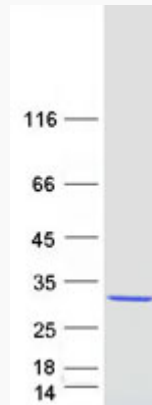
 Tel: 1-631-559-9269 1-516-512-3133

 Email: info@creative-biomart.com  Fax: 1-631-938-8127

 45-1 Ramsey Road, Shirley, NY 11967, USA



SDS-PAGE



Tel: 1-631-559-9269 1-516-512-3133

Email: info@creative-biomart.com Fax: 1-631-938-8127

45-1 Ramsey Road, Shirley, NY 11967, USA