

## Recombinant Human reactive protein, pentraxin-related Protein, His&Flag tagged

Cat. No. CRP-089H Lot. No. (See product label)

### SPECIFICATION

#### Product Overview

Recombinant human C-Reactive Protein/CRP protein (P02741) (Leu 19-Pro 224) with both His, Flag tag at the C-terminus was expressed in HEK293.

#### Species

Human

#### Source

HEK293

#### ProteinLength

19-224aa

#### Description

The protein encoded by this gene belongs to the pentraxin family which also includes serum amyloid P component protein and pentraxin 3. Pentraxins are involved in complement activation and amplification via communication with complement initiation pattern recognition molecules, but also complement regulation via recruitment of complement regulators. The encoded protein has a calcium dependent ligand binding domain with a distinctive flattened beta-jellyroll structure. It exists in two forms as either a pentamer in circulation or as a nonsoluble monomer in tissues. It is involved in several host defense related functions based on its ability to recognize foreign pathogens and damaged cells of the host and to initiate their elimination by interacting with humoral and cellular effector systems in the blood. Consequently, the level of this protein in plasma increases greatly during acute phase response to tissue injury, infection, or other inflammatory stimuli. Elevated expression of the encoded protein is associated with severe acute respiratory syndrome coronavirus 2 (SARS-CoV-2) infection.

 Tel: 1-631-559-9269 1-516-512-3133

 Email: [info@creative-biomart.com](mailto:info@creative-biomart.com)  Fax: 1-631-938-8127

 45-1 Ramsey Road, Shirley, NY 11967, USA

<b>Tag</b>	C-His&Flag
<b>Molecular Mass</b>	25.7 kDa
<b>Endotoxin</b>	Less than 1.0 EU/μg by the LAL method.
<b>Purity</b>	>95% as determined by SDS-PAGE.
<b>Storage</b>	Please avoid repeated freeze-thaw cycles. Samples are stable for up to twelve months from date of receipt at -20 to -80 centigrade. It is recommended that aliquot the reconstituted solution to minimize freeze-thaw cycles.
<b>Storage Buffer</b>	Lyophilized from a 0.2 μm filtered solution of PBS, pH7.4, 5% Trehalose, 5% mannitol.
<b>Reconstitution</b>	Reconstitute at 250 μg/mL in sterile water.

## GENE INFORMATION

<b>Gene Name</b>	CRP C-reactive protein, pentraxin-related [ Homo sapiens (human) ]
<b>Official Symbol</b>	CRP
<b>Synonyms</b>	CRP; C-reactive protein, pentraxin-related; C-reactive protein; pentraxin 1; PTX1; MGC88244; MGC149895;
<b>Gene ID</b>	1401
<b>mRNA Refseq</b>	NM_000567
<b>Protein Refseq</b>	NP_000558

 Tel: 1-631-559-9269 1-516-512-3133

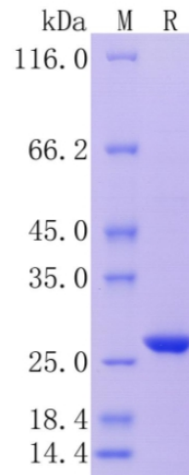
 Email: [info@creative-biomart.com](mailto:info@creative-biomart.com)  Fax: 1-631-938-8127

 45-1 Ramsey Road, Shirley, NY 11967, USA

MIM 123260

UniProt ID P02741

Protein on SDS-  
PAGE under  
reducing (R)  
condition.



Tel: 1-631-559-9269 1-516-512-3133

Email: [info@creative-biomart.com](mailto:info@creative-biomart.com) Fax: 1-631-938-8127

45-1 Ramsey Road, Shirley, NY 11967, USA