

Recombinant Sheep CRP Protein, His-tagged

Cat. No. CRP-1741S **Lot. No.** (See product label)

SPECIFICATION

Product Overview	Recombinant Sheep CRP Protein (Gln20-Trp224) with N-His tag was expressed in E. coli.
Species	Sheep
Source	E.coli
ProteinLength	Gln20-Trp224
Description	Predicted to enable several functions, including cholesterol binding activity; complement component C1q complex binding activity; and low-density lipoprotein particle binding activity. Predicted to be involved in several processes, including complement activation, classical pathway; regulation of gene expression; and regulation of superoxide anion generation. Predicted to act upstream of or within vasoconstriction. Predicted to be located in filopodium and growth cone. Predicted to be active in extracellular space. Is expressed in embryo and liver. Human ortholog(s) of this gene implicated in several diseases, including Kawasaki disease; autoimmune disease (multiple); macular degeneration (multiple); middle cerebral artery infarction; and nephritis (multiple). Orthologous to human CRP (C-reactive protein).
Form	Freeze-dried powder
Molecular Mass	Predicted Molecular Mass: 26.9 kDa Accurate Molecular Mass: 27 kDa

 Tel: 1-631-559-9269 1-516-512-3133

 Email: info@creative-biomart.com  Fax: 1-631-938-8127

 45-1 Ramsey Road, Shirley, NY 11967, USA

Purity	> 90%
Applications	Positive Control; Immunogen; SDS-PAGE; WB.
Stability	The thermal stability is described by the loss rate. The loss rate was determined by accelerated thermal degradation test, that is, incubate the protein at 37 centigrade for 48h, and no obvious degradation and precipitation were observed. The loss rate is less than 5% within the expiration date under appropriate storage condition.
Storage	Avoid repeated freeze/thaw cycles. Store at 2-8 centigrade for one month. Aliquot and store at -80 centigrade for 12 months.
Storage Buffer	20mM Tris, 150mM NaCl, pH8.0, containing 1mM EDTA, 1mM DTT, 0.01% SKL, 5% Trehalose and Proclin300.
Reconstitution	Reconstitute in 20mM Tris, 150mM NaCl (pH8.0) to a concentration of 0.1-1.0 mg/mL. Do not vortex.

GENE INFORMATION

Gene Name	LOC101115495 C-reactive protein [<i>Ovis aries</i> (sheep)]
Official Symbol	CRP
Synonyms	LOC101115495; C-reactive protein; C-reactive protein
Gene ID	101115495
mRNA Refseq	XM_004002651
Protein Refseq	XP_004002700

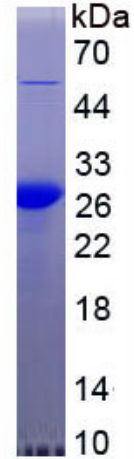
 Tel: 1-631-559-9269 1-516-512-3133

 Email: info@creative-biomart.com  Fax: 1-631-938-8127

 45-1 Ramsey Road, Shirley, NY 11967, USA

UniProt ID

W5PD71



 Tel: 1-631-559-9269 1-516-512-3133

 Email: info@creative-biomart.com  Fax: 1-631-938-8127

 45-1 Ramsey Road, Shirley, NY 11967, USA