

Recombinant Human CRP Protein (Gln19-Pro224), C-His tagged

Cat. No. CRP-1812H Lot. No. (See product label)

SPECIFICATION

Product Overview	Recombinant human CRP (Gln19-Pro224) fused with C-terminal His tag was expressed in E. coli.
Species	Human
Source	E.coli
ProteinLength	Gln19-Pro224
Form	Lyophilized powder/frozen liquid
Molecular Mass	22.66 kDa
Purity	>90% as determined by SDS-PAGE
Notes	For research use only.
Storage	Use a manual defrost freezer and avoid repeated freeze thaw cycles. Store at 2 to 8 centigrade for one week. Store at -20 to -80 centigrade for twelve months from the date of receipt.
Storage Buffer	Supplied as solution form in PBS or lyophilized from PBS.
Reconstitution	Reconstitute in sterile water for a stock solution.

 Tel: 1-631-559-9269 1-516-512-3133

 Email: info@creative-biomart.com  Fax: 1-631-938-8127

 45-1 Ramsey Road, Shirley, NY 11967, USA

Shipping

They are shipped out with dry ice/blue ice unless customers require otherwise.

GENE INFORMATION**Gene Name**

CRP C-reactive protein, pentraxin-related [Homo sapiens (human)]

Official Symbol

CRP

Synonyms

CRP; C-reactive protein, pentraxin-related; C-reactive protein; pentraxin 1; PTX1; MGC88244; MGC149895;

Gene ID

1401

mRNA Refseq

NM_000567

Protein Refseq

NP_000558

MIM

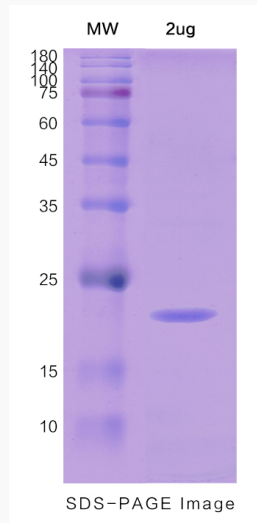
123260

UniProt ID

P02741

 Tel: 1-631-559-9269 1-516-512-3133 Email: info@creative-biomart.com  Fax: 1-631-938-8127 45-1 Ramsey Road, Shirley, NY 11967, USA

SDS-PAGE



 Tel: 1-631-559-9269 1-516-512-3133

 Email: info@creative-biomart.com  Fax: 1-631-938-8127

 45-1 Ramsey Road, Shirley, NY 11967, USA