

Recombinant Human CRP Protein (Phe17-Pro224), N-His tagged

Cat. No. CRP-1816H Lot. No. (See product label)

SPECIFICATION

Product Overview	Recombinant human CRP (Phe17-Pro224) fused with N-His tag was expressed in E. coli.
Species	Human
Source	E.coli
ProteinLength	Phe17-Pro224
Form	Lyophilized powder/frozen liquid
Molecular Mass	25.56 kDa
Purity	>90% as determined by SDS-PAGE
Notes	For research use only.
Storage	Use a manual defrost freezer and avoid repeated freeze thaw cycles. Store at 2 to 8 centigrade for one week. Store at -20 to -80 centigrade for twelve months from the date of receipt.
Storage Buffer	0.01M PBS, pH 7.4, 0.02% NLS
Reconstitution	Reconstitute in sterile water for a stock solution.

 Tel: 1-631-559-9269 1-516-512-3133

 Email: info@creative-biomart.com  Fax: 1-631-938-8127

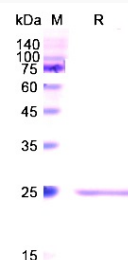
 45-1 Ramsey Road, Shirley, NY 11967, USA

Shipping They are shipped out with dry ice/blue ice unless customers require otherwise.

GENE INFORMATION

Gene Name	CRP C-reactive protein, pentraxin-related [Homo sapiens (human)]
Official Symbol	CRP
Synonyms	CRP; C-reactive protein, pentraxin-related; C-reactive protein; pentraxin 1; PTX1; MGC88244; MGC149895;
Gene ID	1401
mRNA Refseq	NM_000567
Protein Refseq	NP_000558
MIM	123260
UniProt ID	P02741

SDS-PAGE



Tel: 1-631-559-9269 1-516-512-3133

Email: info@creative-biomart.com Fax: 1-631-938-8127

45-1 Ramsey Road, Shirley, NY 11967, USA