

Recombinant Human CRP protein, His-tagged

Cat. No. CRP-7313H Lot. No. (See product label)

SPECIFICATION

Product Overview	Recombinant Human CRP (Phe17-Pro224) protein was fused to His-tag at C-terminus and expressed in human 293 cells (HEK293).
Species	Human
Source	HEK293
ProteinLength	Phe17-Pro224
Description	<p>C-reactive protein (CRP) is a member of the pentraxin family of proteins that are characterized by a cyclic pentameric structure. Human CRP gene encodes a 224 amino acids precursor. The mature human CRP protein has 206 amino acids that are noncovalently linked to form the pentamer. Human CRP shares 71% and 64% amino acid sequence homology with mouse and rat respectively. CRP, synthesized by hepatocytes, is a major acute phase serum protein in human. IL6, IL1 and glucocorticoids are the major inducer of the CRP gene. The physiological role of CRP is to bind to phosphocholine expressed on the surface of dead or dying cells (and some types of bacteria) in order to activate the complement system. CRP binds to phosphocholine on microbes and damaged cells and enhances phagocytosis by macrophages. Thus, CRP participates in the clearance of necrotic and apoptotic cells. CRP rises up to 50,000-fold in acute inflammation, such as infection. It rises above normal limits within 6 hours, and peaks at 48 hours. Its half-life is constant, and therefore its level is mainly determined by the rate of production. It has been shown that high levels of CRP in humans is associated with an increased risk of</p>

 Tel: 1-631-559-9269 1-516-512-3133

 Email: info@creative-biomart.com  Fax: 1-631-938-8127

 45-1 Ramsey Road, Shirley, NY 11967, USA

cardiovascular diseases.

Predicted N Terminal Phe17

Form Lyophilized from 0.22 µm filtered solution in Tris-NaCl buffer pH8.0, 10% trehalose.

Molecular Mass This protein has a calculated MW of 24 kDa. The reducing (R) protein migrates as 26 kDa in SDS-PAGE.

Endotoxin Less than 1.0 EU per µg by the LAL method.

Purity >95% as determined by SDS-PAGE.

Storage

For long term storage, the product should be stored at lyophilized state at -20 centigrade or lower.

Please avoid repeated freeze-thaw cycles.

This product is stable after storage at:

- 20 to -70 centigrade for 12 months in lyophilized state;
- 70 centigrade for 3 months under sterile conditions after reconstitution.

Reconstitution It is recommended that sterile water be added to the vial to prepare a stock solution of 0.2 ug/ul. Centrifuge the vial at 4°C before opening to recover the entire contents.

GENE INFORMATION

Gene Name CRP

Official Symbol CRP

Synonyms CRP; C-reactive protein, pentraxin-related; C-reactive protein; pentraxin 1; PTX1; MGC88244; MGC149895

 Tel: 1-631-559-9269 1-516-512-3133

 Email: info@creative-biomart.com  Fax: 1-631-938-8127

 45-1 Ramsey Road, Shirley, NY 11967, USA

Gene ID 1401

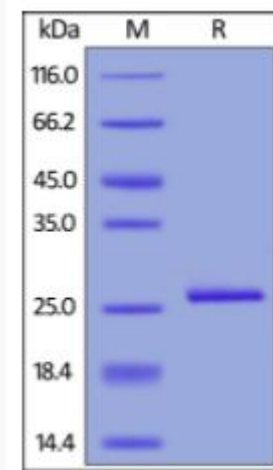
mRNA Refseq NM_000567

Protein Refseq NP_000558

MIM 123260

UniProt ID P02741

SDS-PAGE of CRP-7313H



Human C-Reactive Protein, His Tag on SDS-PAGE under reducing (R) condition. The gel was stained overnight with Coomassie Blue. The purity of the protein is greater than 95%.

Tel: 1-631-559-9269 1-516-512-3133

Email: info@creative-biomart.com Fax: 1-631-938-8127

45-1 Ramsey Road, Shirley, NY 11967, USA