

Recombinant Full Length Human CRTAC1 Protein, His Tagged

Cat. No. CRTAC1-001H Lot. No. (See product label)

SPECIFICATION

Product Overview	Recombinant Full Length Human CRTAC1 Protein (28-661 aa) with His Tag was expressed in HEK293.
Species	Human
Source	HEK293
ProteinLength	28-661 aa
Description	This gene encodes a glycosylated extracellular matrix protein that is found in the interterritorial matrix of articular deep zone cartilage. This protein is used as a marker to distinguish chondrocytes from osteoblasts and mesenchymal stem cells in culture. The presence of FG-GAP motifs and an RGD integrin-binding motif suggests that this protein may be involved in cell-cell or cell-matrix interactions. Copy number alterations in this gene have been observed in neurofibromatosis type 1-associated glomus tumors. Alternative splicing results in multiple transcript variants.
Molecular Mass	70 kDa
AA Sequence	SQRAEPMFTA V T N S V L P P D Y D S N P T Q L N Y G V A V T D V D H D G D F E I V V A G Y N G P N L V L K Y D R A Q K R L V N I A V D E R S S P Y A L R D R Q G N A I G V T A C D I D G D G R E E I Y F L N T N N A F S G V A T Y T D K L F K F R N N R W E D I L S D E V N V A R G V A S L F A G R S V A C V D R K G S G R Y S I Y I A N Y A Y G N V G P D A L I E M D P E A S D L S R G I L A L R D V A A E A G V S K Y T G G R G V S V G P I L S S S A S D I F C D N E N G P N F L F H N R G D G T F V D A A A S A G V D D P H Q H G R G V A L A D F N R D G K V D I V Y G N W N G P H R L Y L Q M S T H G K V R F R D I A S P K F S M P S P V R T V I T A D F D N D Q E L E I F F N N I

 Tel: 1-631-559-9269 1-516-512-3133

 Email: info@creative-biomart.com  Fax: 1-631-938-8127

 45-1 Ramsey Road, Shirley, NY 11967, USA

AYRSSSANRLFRVIRREHGDPLIEELNPGDALEPEGRGTGGVVTFDFDGDGMLDLILS
 HGESMAQPLSVFRGNQGFNNNWLRVVPRTRFGAFARGAKVVLYTKKSGAHLRIIDG
 GSGYLCEMEPVAHFGLGKDEASSVEVTWPDGKMVSRNVASGEMNSVLEILYPRDE
 DTLQDPAPLECGQGFSQQENGHCMMDTNECIQFPFVCPDKPVCVNTYGSYRCRTN
 KKCSRGYEPNEDGTACVGTGQSPGPRPTTPTAAAATAAAAAAGAATAAPVLVDG
 DLNLGSVVKESCEPSCHHHHHHHH

Endotoxin < 1 EU/μg by LAL.

Purity > 90 % by SDS-PAGE

Storage Store it under sterile conditions at -20 to -80 centigrade. It is recommended that the protein be aliquoted for optimal storage. Avoid repeated freeze-thaw cycles.

Storage Buffer Sterile PBS, pH7.4

Concentration 0.66 mg/mL by BCA

GENE INFORMATION

Gene Name CRTAC1 cartilage acidic protein 1 [Homo sapiens (human)]

Official Symbol CRTAC1

Synonyms CRTAC1; cartilage acidic protein 1; ASPIC; CEP68; LOTUS; ASPIC1; CEP-68; cartilage acidic protein 1; acidic secreted protein in cartilage; chondrocyte expressed protein 68 kDa CEP-68

Gene ID 55118

mRNA Refseq NM_018058

 Tel: 1-631-559-9269 1-516-512-3133

 Email: info@creative-biomart.com  Fax: 1-631-938-8127

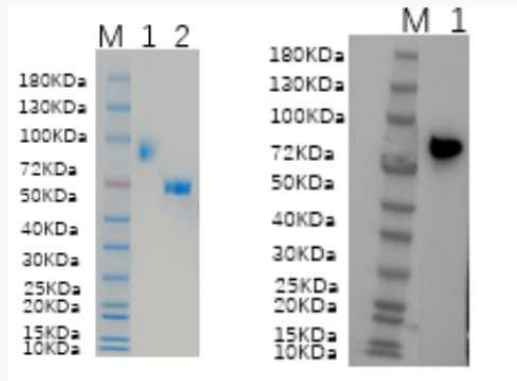
 45-1 Ramsey Road, Shirley, NY 11967, USA

Protein Refseq NP_060528

MIM 606276

UniProt ID Q9NQ79

Reducing 4 %-20 %
SDS-PAGE (CBB
stained) and WB
(Anti-His Mouse
Monoclonal
antibody) analysis
profiles of purified
CRTAC1.



1. CRTAC1: 1 μ g
2. BSA: 1 μ g

 Tel: 1-631-559-9269 1-516-512-3133

 Email: info@creative-biomart.com  Fax: 1-631-938-8127

 45-1 Ramsey Road, Shirley, NY 11967, USA