

Recombinant Human CRTAC1 Protein, GST-tagged

Cat. No. CRTAC1-1911H Lot. No. (See product label)

SPECIFICATION

Product Overview	Human CRTAC1 full-length ORF (AAH34245.1, 1 a.a. - 451 a.a.) recombinant protein with GST-tag at N-terminal.
Species	Human
Source	Wheat Germ
Description	<p>This gene encodes a glycosylated extracellular matrix protein that is found in the interterritorial matrix of articular deep zone cartilage. This protein is used as a marker to distinguish chondrocytes from osteoblasts and mesenchymal stem cells in culture. The presence of FG-GAP motifs and an RGD integrin-binding motif suggests that this protein may be involved in cell-cell or cell-matrix interactions. Copy number alterations in this gene have been observed in neurofibromatosis type 1-associated glomus tumors. Alternative splicing results in multiple transcript variants. [provided by RefSeq, Aug 2011]</p>
Molecular Mass	74.7 kDa
AA Sequence	<p>MDPEASDLRSGILALRDVAAEAGVSKYTGGRGVSVGPILSSSASDIFCDNENGNFL FHNRGDGTVDAAASAGVDDPHQHGRGVALADFNRDGKVDIVYGNWNGPHRLYL QMSTHGKVRFRDIASPKFSMPSPVRTVITADFDNDQELEIFFNNIAYRSSSANRLFRV IRREHGDPLIEELNPGDALEPEGRGTGGVVTDFDGDGMLDLILSHGESMAQPLSVFR GNQGFNNWLRVVPRTFRFGAFARGAKVVLYTKKSGAHLRIIDGGSGYLCEMEPVAH FGLGKDEASSVEVTWPDGKMVSRNVASGEMNSVLEILYPRDEDTLQDPAPLECGQ</p>

 Tel: 1-631-559-9269 1-516-512-3133

 Email: info@creative-biomart.com  Fax: 1-631-938-8127

 45-1 Ramsey Road, Shirley, NY 11967, USA

GFSQQENGHCMMDTNECIQFPFVCPRDKPVCVNTYGSYRCRTNKKCSRGYEPNED
 GTACVGTLGQSPGPRPTTPTAAAATAAAAAAAGAATAAPVLVDGDLNLGSSVVKESC
 EPSC

Applications	Enzyme-linked Immunoabsorbent Assay Western Blot (Recombinant protein) Antibody Production Protein Array
Notes	Best use within three months from the date of receipt of this protein.
Storage	Store at -80 centigrade. Aliquot to avoid repeated freezing and thawing.
Storage Buffer	50 mM Tris-HCl, 10 mM reduced Glutathione, pH=8.0 in the elution buffer.

GENE INFORMATION

Gene Name	CRTAC1 cartilage acidic protein 1 [Homo sapiens]
Official Symbol	CRTAC1
Synonyms	CRTAC1; cartilage acidic protein 1; ASPIC1; CEP 68; FLJ10320; acidic secreted protein in cartilage; chondrocyte expressed protein 68 kDa CEP-68; ASPIC; CEP-68;
Gene ID	55118
mRNA Refseq	NM_001206528
Protein Refseq	NP_001193457
MIM	606276

 Tel: 1-631-559-9269 1-516-512-3133

 Email: info@creative-biomart.com  Fax: 1-631-938-8127

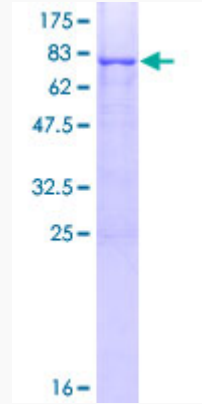
 45-1 Ramsey Road, Shirley, NY 11967, USA

UniProt ID

Q9NQ79

Quality Control

Testing:



12.5% SDS-PAGE Stained with Coomassie Blue.

 Tel: 1-631-559-9269 1-516-512-3133

 Email: info@creative-biomart.com  Fax: 1-631-938-8127

 45-1 Ramsey Road, Shirley, NY 11967, USA