

# Recombinant Human CRTAC1 Protein, MYC/DDK-tagged, C13 and N15-labeled

**Cat. No.** CRTAC1-239H    **Lot. No.** (See product label)

## SPECIFICATION

<b>Product Overview</b>	CRTAC1 MS Standard C13 and N15-labeled recombinant protein (NP_060528) with a C-terminal MYC/DDK tag, was expressed in HEK293 cells.
<b>Species</b>	Human
<b>Source</b>	HEK293
<b>Description</b>	This gene encodes a glycosylated extracellular matrix protein that is found in the interterritorial matrix of articular deep zone cartilage. This protein is used as a marker to distinguish chondrocytes from osteoblasts and mesenchymal stem cells in culture. The presence of FG-GAP motifs and an RGD integrin-binding motif suggests that this protein may be involved in cell-cell or cell-matrix interactions. Copy number alterations in this gene have been observed in neurofibromatosis type 1-associated glomus tumors. Alternative splicing results in multiple transcript variants. [provided by RefSeq, Aug 2011]
<b>Molecular Mass</b>	71.2 kDa
<b>AA Sequence</b>	MAPSADPGMSRMLPFLLLLWFLPITEGSQRAEPMFTA VTN SVLPPDYDSNPTQLNY GVA VTDVDHDGDFEIVVAGYNGPNLV LKYDRAQKRLVNI AVDERSSPPYYALRDRQG NAIGVTACDIDGDGREEIYFLNTNNAFSGVATYTDKLFKFRNNRWEDILSDEVNVAR GVASL FAGRSVACVDRKGSGRYSIYIANYAYGNVGPDALIEMDPEASDL SRGILALR DVAAEAGVSKYTGGRGVSVGPILSSSASDIFCDNENGPNFLFHNRGDGTFVDA AAS

 Tel: 1-631-559-9269    1-516-512-3133

 Email: [info@creative-biomart.com](mailto:info@creative-biomart.com)     Fax: 1-631-938-8127

 45-1 Ramsey Road, Shirley, NY 11967, USA

AGVDDPHQHGRGVALADFNDRDGKVDIVYGNWNGPHRLYLQMSTHGKVRFRDIASP  
 KFSMPSPVRTVITADFDNDQELEIFFNNIAYRSSSANRLFRVIRREHGDPLEELNPGD  
 ALEPEGRGTGGVVTFDFDGDGMLDLILSHGESMAQPLSVFRGNQGFNNNWLRVVPR  
 TRFGAFARGAKVVLYTKKSGAHLRIIDGGSGYLCEMEPVAHFGLGKDEASSVEVTW  
 PDGKMVSRNVASGEMNSVLEILYPRDEDTLQDPAPLECGQGFSQQENGHCMdTNE  
 CIQFPFVCPRDKPVCVNTYGSYRCRTNKKCSRGYEPNEDGTACVGTGLGQSPGPRP  
 TTPTAAAATAAAAAAGAATAAPVLVDGDLNLGSSVVKESCEPSCSTRTRPLEQKLISE  
 EDLAANDILDYKDDDDKV

**Purity** > 80% as determined by SDS-PAGE and Coomassie blue staining

**Stability** Stable for 3 months from receipt of products under proper storage and handling conditions.

**Storage** Store at -80 centigrade. Avoid repeated freeze-thaw cycles.

**Concentration** 50 µg/mL as determined by BCA

**Storage Buffer** 100 mM glycine, 25 mM Tris-HCl, pH 7.3.

## GENE INFORMATION

**Gene Name** CRTAC1 cartilage acidic protein 1 [ Homo sapiens (human) ]

**Official Symbol** CRTAC1

**Synonyms** CRTAC1; cartilage acidic protein 1; ASPIC1; CEP 68; FLJ10320; acidic secreted protein in cartilage; chondrocyte expressed protein 68 kDa CEP-68; ASPIC; CEP-68;

**Gene ID** 55118

 Tel: 1-631-559-9269 1-516-512-3133

 Email: [info@creative-biomart.com](mailto:info@creative-biomart.com)  Fax: 1-631-938-8127

 45-1 Ramsey Road, Shirley, NY 11967, USA

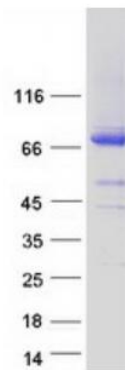
mRNA Refseq [NM\\_018058](#)

Protein Refseq [NP\\_060528](#)

MIM [606276](#)

UniProt ID [Q9NQ79](#)

#### SDS-PAGE



 Tel: 1-631-559-9269 1-516-512-3133

 Email: [info@creative-biomart.com](mailto:info@creative-biomart.com)  Fax: 1-631-938-8127

 45-1 Ramsey Road, Shirley, NY 11967, USA