

Recombinant Human CRTAM Protein, C-His-tagged

Cat. No. CRTAM-119H Lot. No. (See product label)

SPECIFICATION

Product Overview Recombinant Human CRTAM Protein with C-His tag was expressed in E. coli.

Species Human

Source E.coli

Description

CD355, mediates heterophilic cell-cell adhesion which regulates the activation, differentiation and tissue retention of various T-cell subsets. Interaction with CADM1 promotes natural killer (NK) cell cytotoxicity and IFNG/interferon-gamma secretion by CD8+ T-cells in vitro as well as NK cell-mediated rejection of tumors expressing CADM1 in vivo. Regulates CD8+ T-cell proliferation in response to T-cell receptor (TCR) activation. Appears to be dispensable for CD8+ T-cell-mediated cytotoxicity. Interaction with SCRIB promotes the late phase of cellular polarization of a subset of CD4+ T-cells, which in turn regulates TCR-mediated proliferation and IFNG, IL17 and IL22 production. By interacting with CADM1 on CD8+ dendritic cells, regulates the retention of activated CD8+ T-cells within the draining lymph node (By similarity). Required for the intestinal retention of intraepithelial CD4+ CD8+ T-cells and, to a lesser extent, intraepithelial and lamina propria CD8+ T-cells and CD4+ T-cells (By similarity). Interaction with CADM1 promotes the adhesion to gut-associated CD103+ dendritic cells, which may facilitate the expression of gut-homing and adhesion molecules on T-cells and the conversion of CD4+ T-cells into CD4+ CD8+ T-cells (By similarity).

Molecular Mass ~30 kDa

 Tel: 1-631-559-9269 1-516-512-3133

 Email: info@creative-biomart.com  Fax: 1-631-938-8127

 45-1 Ramsey Road, Shirley, NY 11967, USA

AA Sequence	SLTNHTETITVEEGQTLTLKCVTSLRKNSSLQWLTPSGFTIFLNEYPAKNSKYQLLH HSANQLSITVPNVTLQDEGVYKCLHYSVSTKEVKVIVLATPFKPILEASVIRKQNGE EHVLMCSTMRSKPPPQITWLLGNSMEVSGGTLHEFETDGKKCNTTSTLIIHTYGKN STVDCIIRHRGLQGRKLVAPFRFEDLVTDEETASDALERNLSSQDPQQPTSTVSVT EDSSTSEIDKEEKEQTTQDPDLTTEANPQYLGLARKKSG
Purity	Transferred into competent cells and the supernatant was purified by NI column affinity chromatography and the purity is > 85% (by SDS-PAGE).
Notes	For research use only, not for use in diagnostic procedure.
Storage	Store at 4 centigrade short term. Aliquot and store at -20 centigrade long term. Avoid freeze-thaw cycles.
Concentration	≥0.5 mg/mL
Storage Buffer	PBS, 4M Urea, pH7.4

GENE INFORMATION

Gene Name	CRTAM cytotoxic and regulatory T cell molecule [Homo sapiens (human)]
Official Symbol	CRTAM
Synonyms	CRTAM; cytotoxic and regulatory T cell molecule; cytotoxic and regulatory T-cell molecule; CD355; class I MHC restricted T cell associated molecule; class-I MHC-restricted T cell associated molecule; class-I MHC-restricted T-cell-associated molecule;
Gene ID	56253

 Tel: 1-631-559-9269 1-516-512-3133

 Email: info@creative-biomart.com  Fax: 1-631-938-8127

 45-1 Ramsey Road, Shirley, NY 11967, USA

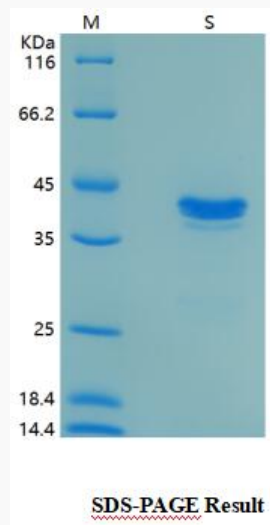
mRNA Refseq [NM_019604](#)

Protein Refseq [NP_062550](#)

MIM [612597](#)

UniProt ID [O95727](#)

SDS-PAGE



 Tel: 1-631-559-9269 1-516-512-3133

 Email: info@creative-biomart.com  Fax: 1-631-938-8127

 45-1 Ramsey Road, Shirley, NY 11967, USA