

Recombinant Human CRTAM Protein, GST-tagged

Cat. No. CRTAM-1913H **Lot. No.** (See product label)

SPECIFICATION

Product Overview	Human CRTAM full-length ORF (AAH70266.1, 1 a.a. - 393 a.a.) recombinant protein with GST-tag at N-terminal.
Species	Human
Source	Wheat Germ
Description	The CRTAM gene is upregulated in CD4 (see MIM 186940)-positive and CD8 (see CD8A; MIM 186910)-positive T cells and encodes a type I transmembrane protein with V and C1-like Ig domains (Yeh et al., 2008 [PubMed 18329370]).[supplied by OMIM, Feb 2009]
Molecular Mass	71.1 kDa
AA Sequence	MWWRVLSLLAWFPLQEASLTNHTETITVEEGQTLTKCVTSLRKNSSLQWLTPSGF TIFLNEYPVLKNSKYQLLHHSANQLSITVPNVTLQDEGVYKCLHYSDSVSTKEVKVIVL ATPFKPILEASVIRKQNGEEHVLMCSTMRSKPPPQITWLLGNSMEVSGGTLHEFET DGKKCNTTSTLIIHTYGKNSTVDCIIRHRGLQGRKLVAPFRFEDLVTDEETASDALER NSLSSQDPQQPTSTVSVTEDSSTSEIDKEEKEQTTQDPDLTTEANPQYLGLARKKS GILLTLVSFLIFILFIIVQLFIMKLRKTHVIWKKENEVSEHTLESYRSRSNNEETSSEEK NGQSSHPMRCMNYITKLYSEGKTKRKENVQHSKLEEKHIQVPESIV
Applications	Enzyme-linked Immunoabsorbent Assay Western Blot (Recombinant protein) Antibody Production

 Tel: 1-631-559-9269 1-516-512-3133

 Email: info@creative-biomart.com  Fax: 1-631-938-8127

 45-1 Ramsey Road, Shirley, NY 11967, USA

Protein Array

Notes	Best use within three months from the date of receipt of this protein.
Storage	Store at -80 centigrade. Aliquot to avoid repeated freezing and thawing.
Storage Buffer	50 mM Tris-HCl, 10 mM reduced Glutathione, pH=8.0 in the elution buffer.

GENE INFORMATION

Gene Name	CRTAM cytotoxic and regulatory T cell molecule [Homo sapiens]
Official Symbol	CRTAM
Synonyms	CRTAM; cytotoxic and regulatory T cell molecule; cytotoxic and regulatory T-cell molecule; CD355; class I MHC restricted T cell associated molecule; class-I MHC-restricted T cell associated molecule; class-I MHC-restricted T-cell-associated molecule;
Gene ID	56253
mRNA Refseq	NM_019604
Protein Refseq	NP_062550
MIM	612597
UniProt ID	O95727

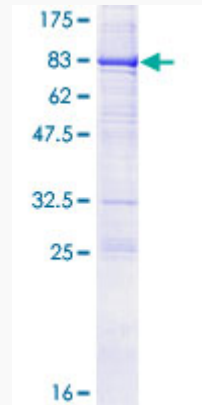
 Tel: 1-631-559-9269 1-516-512-3133

 Email: info@creative-biomart.com  Fax: 1-631-938-8127

 45-1 Ramsey Road, Shirley, NY 11967, USA

Quality Control

Testing:



12.5% SDS-PAGE Stained with Coomassie Blue.

 Tel: 1-631-559-9269 1-516-512-3133

 Email: info@creative-biomart.com  Fax: 1-631-938-8127

 45-1 Ramsey Road, Shirley, NY 11967, USA