

Recombinant Cynomolgus CRTAM protein, Fc-tagged

Cat. No. CRTAM-366C Lot. No. (See product label)

SPECIFICATION

Product Overview Recombinant Cynomolgus CRTAM protein (Ser18-Gly287), fused to human IgG1 Fc tag at C-terminus, was expressed in human 293 cells (HEK293).

Species Cynomolgus

Source HEK293

ProteinLength 270

Description Class I-restricted T cell-associated molecule (CRTAM), a member of nectin family and the immunoglobulin superfamily, is also known as cytotoxic and regulatory T-cell molecule, which is expressed by activated CD8+ and NK T cells. CRTAM is found in spleen, thymus, small intestine, peripheral blood, and surprisingly, in brain where it is highly expressed by Purkinje cells of the cerebellum. The high affinity of CRTAM/IGSF4 adhesion allows CRTAM to disrupt IGSF4 homotypic interactions. IGSF4 and T cell receptor co-engagement of CRTAM-expressing CD8+ cells induces increased IFN-gamma or IL-22 production. Furthermore, a role in cancer surveillance through NK cell-mediated rejection of IGSF4-expressing tumors has been proposed.

Form Lyophilized from 0.22 um filtered solution in Tris with Glycine, Arginine and NaCl, pH7.5, 10% trehalose.

Molecular Mass The protein has a calculated MW of 56.6 kDa. The protein migrates as 85-95 kDa under reducing (R) condition (SDS-PAGE).

 Tel: 1-631-559-9269 1-516-512-3133

 Email: info@creative-biomart.com  Fax: 1-631-938-8127

 45-1 Ramsey Road, Shirley, NY 11967, USA

Endotoxin	Less than 1.0 EU per ug by the LAL method.
Purity	>90% as determined by SDS-PAGE.
Storage	<p>For long term storage, the product should be stored at lyophilized state at -20 centigrade or lower.</p> <p>Please avoid repeated freeze-thaw cycles.</p> <p>This product is stable after storage at:</p> <p>-20 centigrade to -70 centigrade for 12 months in lyophilized state; -70 centigrade for 3 months under sterile conditions after reconstitution.</p>
Reconstitution	It is recommended that sterile water be added to the vial to prepare a stock solution of 0.2 ug/ul. Centrifuge the vial at 4°C before opening to recover the entire contents.

GENE INFORMATION

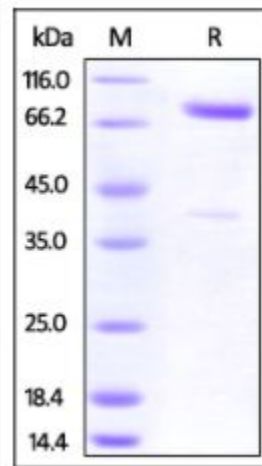
Gene Name	CRTAM
Official Symbol	CRTAM
Synonyms	CD355
Gene ID	707560
mRNA Refseq	XM_005579964.2
Protein Refseq	XP_005580021.1
UniProt ID	A0A2K5TKL4

 Tel: 1-631-559-9269 1-516-512-3133

 Email: info@creative-biomart.com  Fax: 1-631-938-8127

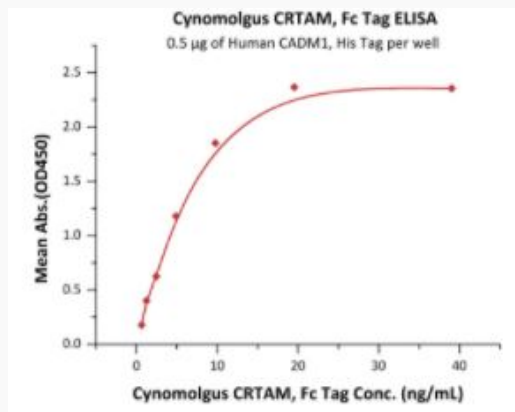
 45-1 Ramsey Road, Shirley, NY 11967, USA

**SDS-PAGE of
CRTAM-366C**



Cynomolgus CRTAM, Fc Tag on SDS-PAGE under reducing (R) condition. The gel was stained overnight with Coomassie Blue. The purity of the protein is greater than 90%.

**Bioactivity-ELISA of
CRTAM-366C**



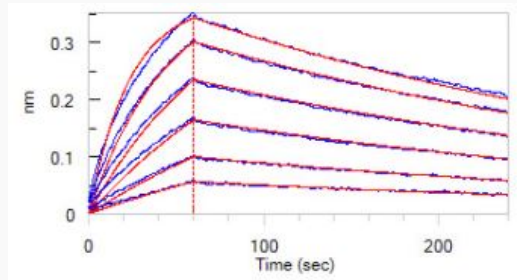
Immobilized Human CADM1, His Tag at 5 $\mu\text{g/mL}$ (100 $\mu\text{L/well}$) can bind Cynomolgus CRTAM, Fc Tag with a linear range of 0.6-10 ng/mL (QC tested).

Tel: 1-631-559-9269 1-516-512-3133

Email: info@creative-biomart.com Fax: 1-631-938-8127

45-1 Ramsey Road, Shirley, NY 11967, USA

**Bioactivity-BLI of
CRTAM-366C**



Loaded Cynomolgus CRTAM, Fc Tag on Protein A Biosensor, can bind Human CADM1, His Tag with an affinity constant of 37.7 nM as determined in BLI assay (Routinely tested).

 Tel: 1-631-559-9269 1-516-512-3133

 Email: info@creative-biomart.com  Fax: 1-631-938-8127

 45-1 Ramsey Road, Shirley, NY 11967, USA