

# Recombinant Human CRTAM Protein (Met1-Ser286), C-His tagged

**Cat. No.** CRTAM-5015H    **Lot. No.** (See product label)

## SPECIFICATION

<b>Product Overview</b>	Recombinant human CRTAM (Met1-Ser286) fused with the C-terminal His tag was expressed in Mammalian cells.
<b>Species</b>	Human
<b>Source</b>	Mammalian Cells
<b>ProteinLength</b>	Met1-Ser286
<b>Form</b>	Lyophilized powder/frozen liquid
<b>Molecular Mass</b>	31.46 kDa
<b>Endotoxin</b>	< 1.0 EU/μg of the protein as determined by the LAL method.
<b>Purity</b>	>90% as determined by SDS-PAGE.
<b>Notes</b>	For research use only.
<b>Storage</b>	Use a manual defrost freezer and avoid repeated freeze thaw cycles. Store at 2 to 8 centigrade for one week. Store at -20 to -80 centigrade for twelve months from the date of receipt.
<b>Storage Buffer</b>	Supplied as solution form in PBS or lyophilized from PBS.

 Tel: 1-631-559-9269    1-516-512-3133

 Email: [info@creative-biomart.com](mailto:info@creative-biomart.com)     Fax: 1-631-938-8127

 45-1 Ramsey Road, Shirley, NY 11967, USA

**Reconstitution** Reconstitute in sterile water for a stock solution.

**Shipping** They are shipped out with dry ice/blue ice unless customers require otherwise.

## GENE INFORMATION

**Gene Name** CRTAM cytotoxic and regulatory T cell molecule [ Homo sapiens (human) ]

**Official Symbol** CRTAM

**Synonyms** CRTAM; cytotoxic and regulatory T cell molecule; cytotoxic and regulatory T-cell molecule; CD355; class I MHC restricted T cell associated molecule; class-I MHC-restricted T cell associated molecule; class-I MHC-restricted T-cell-associated molecule;

**Gene ID** 56253

**mRNA Refseq** NM\_019604

**Protein Refseq** NP\_062550

**MIM** 612597

**UniProt ID** O95727

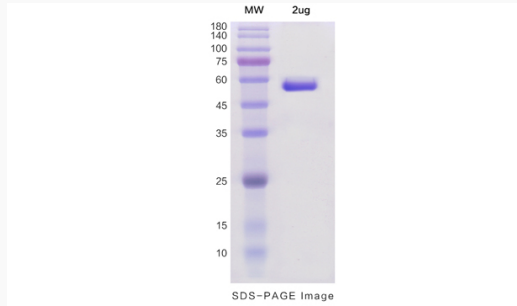
 Tel: 1-631-559-9269 1-516-512-3133

 Email: [info@creative-biomart.com](mailto:info@creative-biomart.com)  Fax: 1-631-938-8127

 45-1 Ramsey Road, Shirley, NY 11967, USA



SDS-PAGE



Tel: 1-631-559-9269 1-516-512-3133

Email: [info@creative-biomart.com](mailto:info@creative-biomart.com) Fax: 1-631-938-8127

45-1 Ramsey Road, Shirley, NY 11967, USA