

Recombinant Human CRTAP protein, His-tagged

Cat. No. CRTAP-4556H **Lot. No.** (See product label)

SPECIFICATION

Product Overview	Recombinant Human CRTAP protein(O75718)(27-401 aa), fused with C-terminal His tag, was expressed in E.coli.
Species	Human
Source	E.coli
ProteinLength	27-401 aa
Form	For liquid formulations, the standard storage buffer consists of a Tris or PBS based solution supplemented with 5-50% glycerol. When provided as lyophilized powder, the product undergoes freeze-drying from a Tris- or PBS-based formulation containing 6% trehalose, adjusted to pH 8.0 prior to the lyophilization process.
Molecular Mass	50.9 kDa
AASequence	QYERYSFRRSFPRLDELMPLESAYRHALDKYSGEHWAESVGYLEISLRLHRLLRDSEA FCHRNCSAAPQPEPAAGLASYPELRLFGGLLRRAHCLKRCKQGLPAFRQSQPSRE VLADFQRREPYKFLQFAYFKANNLPKAIAAAHTFLLKHPDDEMMKRNMAYYKSLPG AEDIYKDLETKSYESLFIKAVRAYNGENWRTSITDMELALPDDFKAFYECLAACEGSR EIKDFKDFYLSIADHYVEVLECKIQCEENLTPVIGGYPVEKFVATMYHYLQFAYYKLN DLKNAAPCAVSYLLFDQNDKVMQQNLVYYQYHRDTWGLSDEHFQPRPEAVQFFNV TTLQKELYDFAKENIMDDDEGEVVEYVDDLLELEETS
Purity	Greater than 85% as determined by SDS-PAGE.

 Tel: 1-631-559-9269 1-516-512-3133

 Email: info@creative-biomart.com  Fax: 1-631-938-8127

 45-1 Ramsey Road, Shirley, NY 11967, USA

Storage Store at -20°C/-80°C upon receipt, aliquoting is necessary for mutiple use. Avoid repeated freeze-thaw cycles.

Reconstitution Please reconstitute protein indeionized sterile water to a concentration of 0.1-1.0 mg/mL. Aliquot for long-term storage at -80°C.

GENE INFORMATION

Gene Name CRTAP cartilage associated protein [Homo sapiens]

Official Symbol CRTAP

Synonyms CRTAP; cartilage associated protein; cartilage-associated protein; CASP; leprecan like 3; LEPREL3; leprecan-like 3; OI7;

Gene ID 10491

mRNA Refseq NM_006371

Protein Refseq NP_006362

MIM 605497

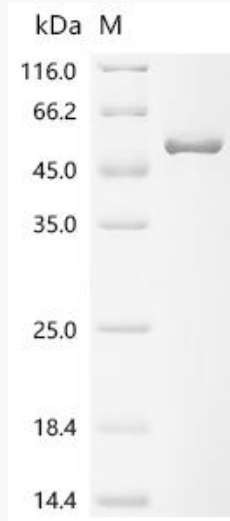
UniProt ID O75718

 Tel: 1-631-559-9269 1-516-512-3133

 Email: info@creative-biomart.com  Fax: 1-631-938-8127

 45-1 Ramsey Road, Shirley, NY 11967, USA

SDS-PAGE



 Tel: 1-631-559-9269 1-516-512-3133

 Email: info@creative-biomart.com  Fax: 1-631-938-8127

 45-1 Ramsey Road, Shirley, NY 11967, USA