

# Recombinant Human CRTAP Protein, Myc/DDK-tagged, C13 and N15-labeled

**Cat. No.** CRTAP-6435H    **Lot. No.** (See product label)

## SPECIFICATION

### Product Overview

CRTAP MS Standard C13 and N15-labeled recombinant protein (NP\_006362) with a C-terminal MYC/DDK tag, was expressed in HEK293 cells.

### Species

Human

### Source

HEK293

### Description

The protein encoded by this gene is similar to the chicken and mouse CRTAP genes. The encoded protein is a scaffolding protein that may influence the activity of at least one member of the cytohesin/ARNO family in response to specific cellular stimuli. Defects in this gene are associated with osteogenesis imperfecta, a connective tissue disorder characterized by bone fragility and low bone mass.

### Molecular Mass

46.5 kDa

### AA Sequence

MEPGRRGAAALLALLCVACALRAGRAQYERYSFRRDELMPLESAYRHALDKYS  
 GEHWAESVGYLEISLRLHRLLRDSEAFCHRNC SAAPQPEPAAGLASYPELRLFGGLL  
 RRAHCLKRCKQGLPAFRQSQPSRDVLADFQRREPYKFLQFAYFKANNLPKAI AAAH  
 TFLLKHPDDEMMKRNMAYYKSLPGAEDYIKDLETKSYESL FIRAVRAYNGENWR TSI  
 TDMELALP DFFKAFYECLAACEGSREIKDFKDFYLSIADHYVEVLECKIQCEENLTPVI  
 GGY PVEKFVATMYHYLQFAYYKLN DLKNAAPCAVSYLLFDQNDKVMQQNLVYYQY  
 HRDTWGLSDEHFQPRPEAVQFFNVTTLQKELYDFAKENIMDDDEGEVVEYVDDLLE  
 LEETSTRTRPLEQKLISEEDLAANDILDYKDDDDKV

 Tel: 1-631-559-9269    1-516-512-3133

 Email: [info@creative-biomart.com](mailto:info@creative-biomart.com)     Fax: 1-631-938-8127

 45-1 Ramsey Road, Shirley, NY 11967, USA



<b>Purity</b>	> 80% as determined by SDS-PAGE and Coomassie blue staining
<b>Stability</b>	Stable for 3 months from receipt of products under proper storage and handling conditions.
<b>Storage</b>	Store at -80 centigrade. Avoid repeated freeze-thaw cycles.
<b>Concentration</b>	50 µg/mL as determined by BCA
<b>Storage Buffer</b>	100 mM glycine, 25 mM Tris-HCl, pH 7.3.

## GENE INFORMATION

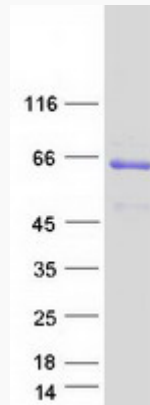
<b>Gene Name</b>	CRTAP cartilage associated protein [ Homo sapiens (human) ]
<b>Official Symbol</b>	CRTAP
<b>Synonyms</b>	CRTAP; cartilage associated protein; cartilage-associated protein; CASP; leprecan like 3; LEPREL3; leprecan-like 3; OI7;
<b>Gene ID</b>	10491
<b>mRNA Refseq</b>	NM_006371
<b>Protein Refseq</b>	NP_006362
<b>MIM</b>	605497
<b>UniProt ID</b>	O75718

Tel: 1-631-559-9269 1-516-512-3133

Email: [info@creative-biomart.com](mailto:info@creative-biomart.com) Fax: 1-631-938-8127

45-1 Ramsey Road, Shirley, NY 11967, USA

**SDS-PAGE**



 Tel: 1-631-559-9269 1-516-512-3133

 Email: [info@creative-biomart.com](mailto:info@creative-biomart.com)  Fax: 1-631-938-8127

 45-1 Ramsey Road, Shirley, NY 11967, USA