

Recombinant Human CRTC1 protein, His & T7-tagged

Cat. No. CRTC1-1113H Lot. No. (See product label)

SPECIFICATION

Product Overview	Recombinant Human CRTC1 aa. (Met1~Ser172 (Accession # Q6UUV9) fused with N-terminal His & T7 tag was produced in E. coli cells.
Species	Human
Source	E.coli
ProteinLength	Met1~Ser172
Form	Freeze-dried powder
Molecular Mass	Predicted Molecular Mass: 22.9kDa.
Endotoxin	<1.0EU per 1g (determined by the LAL method)
Purity	>95%
Characteristic	The isoelectric point is 9.6.
Applications	SDS-PAGE; WB; ELISA; IP.
Stability	The thermal stability is described by the loss rate of the target protein. The loss rate was determined by accelerated thermal degradation test, that is, incubate the protein at 37°C for 48h, and no obvious degradation and precipitation were observed. (Referring from China Biological Products Standard, which was calculated by the

 Tel: 1-631-559-9269 1-516-512-3133

 Email: info@creative-biomart.com  Fax: 1-631-938-8127

 45-1 Ramsey Road, Shirley, NY 11967, USA

Arrhenius equation.) The loss of this protein is less than 5% within the expiration date under appropriate storage condition.

Storage

Avoid repeated freeze/thaw cycles. Store at 2-8°C for one month. Aliquot and store at -80°C for 12 months.

Storage buffer

Supplied as lyophilized form in 20mM Tris, 150mM NaCl, pH8.0, containing 1mM EDTA, 1mM DTT, 0.01% sarcosyl, 5% trehalose, and preservative.

Reconstitution

Reconstitute in sterile ddH₂O.

GENE INFORMATION

Gene Name

[CRTC1 CREB regulated transcription coactivator 1 \[Homo sapiens \(human\) \]](#)

Official Symbol

[CRTC1](#)

Synonyms

CRTC1; CREB regulated transcription coactivator 1; MECT1; TORC1; TORC-1; WAMTP1; CREB-regulated transcription coactivator 1; mucoepidermoid carcinoma translocated protein 1; transducer of regulated cAMP response element-binding protein (CREB) 1

Gene ID

[23373](#)

mRNA Refseq

[NM_001098482.1](#)

Protein Refseq

[NP_001091952.1](#)

UniProt ID

[Q6UUV9](#)

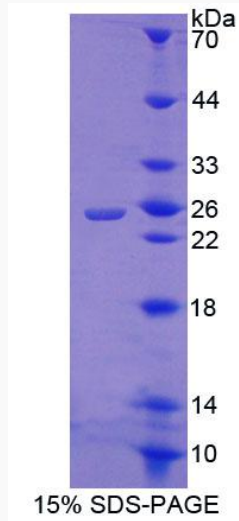
 Tel: 1-631-559-9269 1-516-512-3133

 Email: info@creative-biomart.com  Fax: 1-631-938-8127

 45-1 Ramsey Road, Shirley, NY 11967, USA



SDS-PAGE



Tel: 1-631-559-9269 1-516-512-3133

Email: info@creative-biomart.com Fax: 1-631-938-8127

45-1 Ramsey Road, Shirley, NY 11967, USA