

# Recombinant Full Length Human CRTC1 Protein, C-Flag-tagged

**Cat. No.** CRTC1-1443HFL    **Lot. No.** (See product label)

## SPECIFICATION

<b>Product Overview</b>	Recombinant Full Length Human CRTC1 Protein, fused to Flag-tag at C-terminus, was expressed in Mammalian cells.
<b>Species</b>	Human
<b>Source</b>	Mammalian Cells
<b>Description</b>	Enables cAMP response element binding protein binding activity. Involved in positive regulation of transcription by RNA polymerase II. Located in cytosol; nuclear body; and plasma membrane.
<b>Form</b>	25 mM Tris HCl, pH 7.3, 100 mM glycine, 10% glycerol.
<b>Molecular Mass</b>	67.1 kDa
<b>AA Sequence</b>	<p>MATSNNPRKFSEKIALHNQKQAEETAAFEVVMKDLSTRAARLQLQKSQYLQLGPS  RGQYYGGSLPNVNQ IGSMTMDLPFQTPFQSSGLDTSRTRHHGLVDRVYRERGR  L GSPHRRPLSVDKHGRQADSCPYGTMYSLP PADTSWRRRTNSDSALHQSTMTPTQP  ESFSSGSQDVHQKRVLLLTVPGMEETTSEADKNLSKQAWDTKKTG SRPKSCEVPG  INIFPSADQENTTALIPATHNTGGSLPDLTNIHFPSPLPTPLDPEEPTFPALSSSSSTG  N LAANLTHLGIGGAGQGMSTPGSSPQHRPAGVSPLSLSTEARRQQASPALSPLSPI  TQAVAMDALSLEQQL PYAFFTQAGSQQPPPPQPPPPPPPPASQPPPPPPPPQAPV  RLPPGGPLLPSASLTRGPQPPPLAVTVPS LPQSPENPGQPSMGIDIASAPALQQ  YRTSAGSPANQSPTSPVSNQGFSPGSSPQHTSTLGSVFGDAYYE QQMAARQANA</p>

 Tel: 1-631-559-9269    1-516-512-3133

 Email: [info@creative-biomart.com](mailto:info@creative-biomart.com)     Fax: 1-631-938-8127

 45-1 Ramsey Road, Shirley, NY 11967, USA

LSHQLEQFNMMENAISSSSLYSPGSTLNYSQAAMMGLTGSHGSLPDSQQLGYASH  
 SGIPN IILTVTGESPPSLSKELTSSLAGVGDVSFSDSQFPLDELKIDPLTLDGLHMLN  
 DPDMVLADPATEDTFR  
 MDRLSGPTRRRLEQKLISEEDLAANDILDYKDDDDKV

**Purity** > 80% as determined by SDS-PAGE and Coomassie blue staining.

**Stability** Stable for 12 months from the date of receipt of the product under proper storage and handling conditions. Avoid repeated freeze-thaw cycles.

**Storage** Store at -80 centigrade.

**Concentration** >50 ug/mL as determined by microplate BCA method.

**Preparation** Recombinant protein was captured through anti-DDK affinity column followed by conventional chromatography steps.

**Protein Families** Transcription Factors

**Full Length** Full L.

## GENE INFORMATION

**Gene Name** [CRTC1 CREB regulated transcription coactivator 1 \[ Homo sapiens \(human\) \]](#)

**Official Symbol** [CRTC1](#)

**Synonyms** MAML2; MECT1; Mam-2; TORC1; TORC-1; WAMTP1

**Gene ID** [23373](#)

 Tel: 1-631-559-9269 1-516-512-3133

 Email: [info@creative-biomart.com](mailto:info@creative-biomart.com)  Fax: 1-631-938-8127

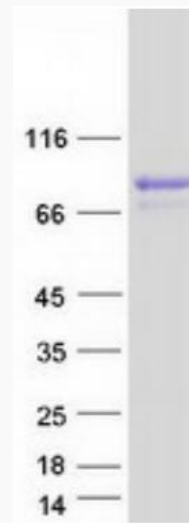
 45-1 Ramsey Road, Shirley, NY 11967, USA

mRNA Refseq [NM\\_015321.3](#)

Protein Refseq [NP\\_056136.2](#)

MIM [607536](#)

UniProt ID [Q6UUV9](#)



Coomassie blue staining of purified CRTTC1 protein.

 Tel: 1-631-559-9269 1-516-512-3133

 Email: [info@creative-biomart.com](mailto:info@creative-biomart.com)  Fax: 1-631-938-8127

 45-1 Ramsey Road, Shirley, NY 11967, USA