

Recombinant Human CRTC1 Protein, Myc/DDK-tagged, C13 and N15-labeled

Cat. No. CRTC1-4944H **Lot. No.** (See product label)

SPECIFICATION

Product Overview

CRTC1 MS Standard C13 and N15-labeled recombinant protein (NP_056136) with a C-terminal MYC/DDK tag, was expressed in HEK293 cells.

Species

Human

Source

HEK293

Description

CRTC1 (CREB Regulated Transcription Coactivator 1) is a Protein Coding gene. Diseases associated with CRTC1 include Mucoepidermoid Carcinoma and Cutaneous Mucoepidermoid Carcinoma. Among its related pathways are Organelle biogenesis and maintenance and Mitochondrial Gene Expression. Gene Ontology (GO) annotations related to this gene include cAMP response element binding protein binding. An important paralog of this gene is CRTC2.

Molecular Mass

67.1 kDa

AA Sequence

MATSNNPRKFSEKIALHNQKQAEETAAFEVVMKDLSLTRAARLQLQKSQYLQLGPS
 RGQYYGGSLPNVNQIGSGTMDLFPQTFQSSGLDTSRTRHHGLVDRVYRERGR
 L GSPHRRPLSVDKHGRQADSCPYGTMYSPPADTSWRRTNSDSALHQSTMTPTQP
 ESFSSGSQDVHQKRVLLLVPGMEETTSEADKNLSKQAWDTKKTGSRPKSCEVPGI
 NIFPSADQENTTALIPATHNTGGSLPDLTNIHFPSPLPTPLDPEEPTFPALSSSSSTGN
 LAANLTHLGIGGAGQGMSTPGSSPQHRPAGVSPSLSLSTEARRQQASPALSPLSPIT
 QAVAMDALSLEQQLPYAFFTQAGSQQPPPQPQPPPPPPASQQPPPPPPQPAPVR

 Tel: 1-631-559-9269 1-516-512-3133

 Email: info@creative-biomart.com  Fax: 1-631-938-8127

 45-1 Ramsey Road, Shirley, NY 11967, USA

LPPGGPLLPSASLTRGPQPPPLAVTVPSSLPQSPPENPGQPSMGIDIASAPALQQYR
 TSAGSPANQSPTSPVSNQGFSPGSSPQHTSTLGSVFGDAYYEQQMAARQANALSH
 QLEQFNMMENAISSSSLYSPGSTLNYSQAAMMGLTGSHGSLPDSQQQLGYASHGIP
 NIILTVTGESPPSLSKELTSSLAGVGDVSDSDSQFPLDELKIDPLTLTGHLMLNDPD
 MVLADPATEDTFRMDRLSGPTRRRLEQKLISEEDLAANDILDYKDDDDKV

Purity > 80% as determined by SDS-PAGE and Coomassie blue staining

Stability Stable for 3 months from receipt of products under proper storage and handling conditions.

Storage Store at -80 centigrade. Avoid repeated freeze-thaw cycles.

Concentration 50 µg/mL as determined by BCA

Storage Buffer 100 mM glycine, 25 mM Tris-HCl, pH 7.3.

GENE INFORMATION

Gene Name [CRTC1 CREB regulated transcription coactivator 1 \[Homo sapiens \(human\) \]](#)

Official Symbol [CRTC1](#)

Synonyms CRTC1; CREB regulated transcription coactivator 1; MECT1, mucoepidermoid carcinoma translocated 1; CREB-regulated transcription coactivator 1; FLJ14027; KIAA0616; TORC1; TORC-1; transducer of CREB protein 1; mucoepidermoid carcinoma translocated 1; mucoepidermoid carcinoma translocated protein 1; transducer of regulated cAMP response element-binding protein 1; transducer of regulated cAMP response element-binding protein (CREB) 1; MECT1; WAMTP1;

Gene ID [23373](#)

 Tel: 1-631-559-9269 1-516-512-3133

 Email: info@creative-biomart.com  Fax: 1-631-938-8127

 45-1 Ramsey Road, Shirley, NY 11967, USA

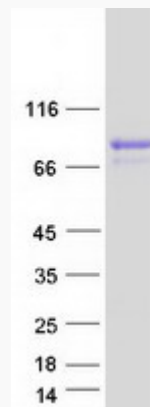
mRNA Refseq [NM_015321](#)

Protein Refseq [NP_056136](#)

MIM [607536](#)

UniProt ID [Q6UUV9](#)

SDS-PAGE



 Tel: 1-631-559-9269 1-516-512-3133

 Email: info@creative-biomart.com  Fax: 1-631-938-8127

 45-1 Ramsey Road, Shirley, NY 11967, USA