

Recombinant Human CRTC1 Protein, Myc/DDK-tagged, C13 and N15-labeled

Cat. No. CRTC1-987H **Lot. No.** (See product label)

SPECIFICATION

Product Overview	CRTC1 MS Standard C13 and N15-labeled recombinant protein (NP_001091952) with a C-terminal MYC/DDK tag, was expressed in HEK293 cells.
Species	Human
Source	HEK293
Description	CRTC1 (CREB Regulated Transcription Coactivator 1) is a Protein Coding gene. Diseases associated with CRTC1 include Mucoepidermoid Carcinoma and Cutaneous Mucoepidermoid Carcinoma. Among its related pathways are Organelle biogenesis and maintenance and Mitochondrial Gene Expression. Gene Ontology (GO) annotations related to this gene include cAMP response element binding protein binding. An important paralog of this gene is CRTC2.
Molecular Mass	68.6 kDa
AA Sequence	MATSNNPRKFSEKIALHNQKQAEETA AFEEVMKDLSLTRAARLQLQKSQYLQLGPS RGQYYGGSLPNVNQIGSGTMDLFPQPSGFLGEALAAAPVSLTPFQSSGLDTSRTRR HHGLVDRVYRERGR LGSPHRRPLSVDKHGRQADSCPYGTM YLSPPADTSWRRTN SDSALHQSTMTPTQPESFSSGSQDVHQKRVLLLTVP GMEETTSEADKNLSKQAWD TKKTGSRPKSCEVPGINIFPSADQENTTALIPATHNTGGSLPDLTNIHFPSPLPTPLDP EEPTFPALSSSSSTGNLAANLTHLGIGGAGQGMSTPGSSPQHRPAGVSPLSLSTE A RRQQASPTLSPLSPITQAVAMDALSLEQQLPYAFFTQAGSQQPPPQPQPPPPPPPA

 Tel: 1-631-559-9269 1-516-512-3133

 Email: info@creative-biomart.com  Fax: 1-631-938-8127

 45-1 Ramsey Road, Shirley, NY 11967, USA

SQQPPPPPPQAPVRLPPGGPLLPSASLTRGPQPPPLAVTVPSSLPQSPPENPGQP
 SMGIDIASAPALQQYRTSAGSPANQSPTSPVSNQGFSPGSSPQHTSTLGSVFGDAY
 YEQQMAARQANALSHQLEQFNMMENAISSSSLYSPGSTLNYSQAAMMGLTGSHGS
 LPDSQQLGYASHSGIPNIILTVTGESPPSLSKELTSSLAGVGDVSDSDSQFPLDELKI
 DPLTL DGLHMLNDPDMVLADPATEDTFRMDRLSGPTRRTRRLEQKLISEEDLAANDIL
 DYKDDDDKV

Purity	> 80% as determined by SDS-PAGE and Coomassie blue staining
Stability	Stable for 3 months from receipt of products under proper storage and handling conditions.
Storage	Store at -80 centigrade. Avoid repeated freeze-thaw cycles.
Concentration	50 µg/mL as determined by BCA
Storage Buffer	100 mM glycine, 25 mM Tris-HCl, pH 7.3.

GENE INFORMATION

Gene Name	CRTC1 CREB regulated transcription coactivator 1 [Homo sapiens (human)]
Official Symbol	CRTC1
Synonyms	CRTC1; CREB regulated transcription coactivator 1; MECT1, mucoepidermoid carcinoma translocated 1; CREB-regulated transcription coactivator 1; FLJ14027; KIAA0616; TORC1; TORC-1; transducer of CREB protein 1; mucoepidermoid carcinoma translocated 1; mucoepidermoid carcinoma translocated protein 1; transducer of regulated cAMP response element-binding protein 1; transducer of regulated cAMP response element-binding protein (CREB) 1; MECT1; WAMTP1;

 Tel: 1-631-559-9269 1-516-512-3133

 Email: info@creative-biomart.com  Fax: 1-631-938-8127

 45-1 Ramsey Road, Shirley, NY 11967, USA

Gene ID 23373

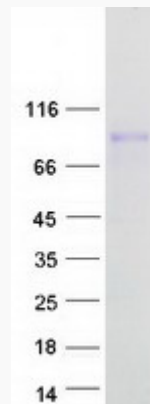
mRNA Refseq NM_001098482

Protein Refseq NP_001091952

MIM 607536

UniProt ID Q6UUV9

SDS-PAGE



Tel: 1-631-559-9269 1-516-512-3133

Email: info@creative-biomart.com Fax: 1-631-938-8127

45-1 Ramsey Road, Shirley, NY 11967, USA