

Recombinant Human CRTC2 Protein, GST tagged

Cat. No. CRTC2-01C Lot. No. (See product label)

SPECIFICATION

Product Overview	Recombinant Human CRTC2 Protein with GST tag was expressed in E. coli.
Species	Human
Source	E.coli
Description	<p>This gene encodes a member of the transducers of regulated cAMP response element-binding protein activity family of transcription coactivators. These proteins promote the transcription of genes targeted by the cAMP response element-binding protein, and therefore play an important role in many cellular processes. Under basal conditions the encoded protein is phosphorylated by AMP-activated protein kinase or the salt-inducible kinases and is sequestered in the cytoplasm. Upon activation by elevated cAMP or calcium, the encoded protein translocates to the nucleus and increases target gene expression. Single nucleotide polymorphisms in this gene may increase the risk of type 2 diabetes. A pseudogene of this gene is located on the long arm of chromosome 5.</p>
Molecular Mass	105 kDa
AA Sequence	<p>MSPILGYWKIKGLVQPTRLLEYLEEKYEEHLYERDEGDKWRNKKFELGLEFPNLPY YIDGDVKLTQSMARIYIADKHNMLGGCPKERAEISMLEGAVLDIRYGVSR IAYS KD FE TLKVDFLSKLPEMLKMFEDRLCHKTYLNGDHVTHPDFMLYDALDVVLYMDPMCLDA FPKLVCFKKRIEAI PQIDKYLKSSKYIAWPLQG WQATFGGGDHPPKSDGSGTSGSGHH HHHSAGLVPRGSTAIGMKETA AAKFERQHMDSPDLGTGGGSGDDDDKSPMATS</p>

 Tel: 1-631-559-9269 1-516-512-3133

 Email: info@creative-biomart.com  Fax: 1-631-938-8127

 45-1 Ramsey Road, Shirley, NY 11967, USA

GANGPGSATASASNPRKFSEKIALQKQRQAEETAAFEEVMMDIGSTRLQAQKLRLA
 YTRSSHYGGSLPNVNQIGSGLAEFQSPLHSPLDSSRSTRHHGLVERVQRDPRRMV
 SPLRRYTRHIDSSPYSPAYLSPPPESSWRRTMAWGNFPAEKGQLFRLPSALNRTSS
 DSALHTSVMNPSPQDTYPGPTPPSILPSRRGGILDGEMDPKVAIEENLLDDKHLK
 PWDAKKLSSSSSRPRSCEVPGINIFSPDQPANVPVLPPAMNTGGSLPDLTNLHFPP
 PLPTPLDPEETAYPSLSGGNSTSNLTHMTHLGISRGMGLGPGYDAPGLHSPLSHP
 SLQSSLSNPNLQASLSSPQPQLQGSHSHPSPASSLARHVLPTTSLGHPSLSAPALS
 SSSSSSTSSPVLGAPSYASTPGASPHHRRVPLSPLSLLAGPADARRSQQLPKQ
 FSPTMSPTLSSITQGVPLDTSKLSTDQRLPPYPYSSPSLVLPTQPHTPKSLQQPGLP
 SQSCSVQSSGGQPPGRQSHYGTPYPPGPSGHGQQSYHRPMSDFNLGNLEQFSM
 ESPSASLVLDPPGFSEGGFLGGEGPMGGPQDPHTFNHQNLTCSRHGSGPNIILT
 GDSSPGFSKEIAAALAGVPGFEVSAAGLELGLGLEDELMEPLGLEGLNMLSDPCAL
 LPDPAVEESFRSDRLQ

Purity > 90% by SDS-PAGE

Storage Store it under sterile conditions at -20 to -80 centigrade. It is recommended that the protein be aliquoted for optimal storage. Avoid repeated freeze-thaw cycles.

Concentration 0.155 mg/mL

Storage Buffer 50mM Tris, 20mM NaCl, pH 8.0

GENE INFORMATION

Gene Name [CRTC2 CREB regulated transcription coactivator 2 \[Homo sapiens \(human\) \]](#)

Official Symbol [CRTC2](#)

Synonyms CRTC2; CREB regulated transcription coactivator 2; CREB-regulated transcription coactivator 2; TORC2; transducer of regulated cAMP response element-binding

 Tel: 1-631-559-9269 1-516-512-3133

 Email: info@creative-biomart.com  Fax: 1-631-938-8127

 45-1 Ramsey Road, Shirley, NY 11967, USA

protein (CREB) 2; TORC-2;

Gene ID [200186](#)

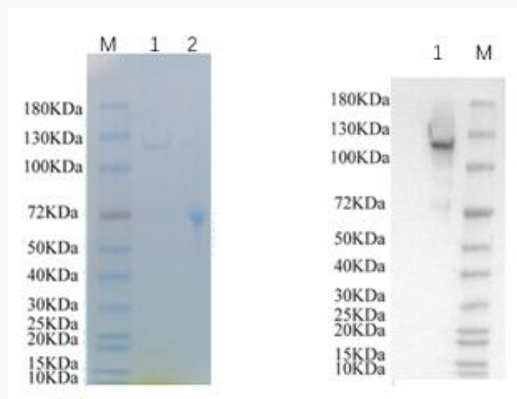
mRNA Refseq [NM_181715](#)

Protein Refseq [NP_859066](#)

MIM [608972](#)

UniProt ID [Q53ET0](#)

Reducing 12% SDS-PAGE (CBB stained) and WB (Anti-His Mouse Monoclonal Antibody) analysis profiles of purified CRTC2



1.CRTC2
2.BSA

 Tel: 1-631-559-9269 1-516-512-3133

 Email: info@creative-biomart.com  Fax: 1-631-938-8127

 45-1 Ramsey Road, Shirley, NY 11967, USA