

Recombinant Human CRTC2 Protein, GST-tagged

Cat. No. CRTC2-01H Lot. No. (See product label)

SPECIFICATION

| | |
|-------------------------|--|
| Product Overview | Recombinant Human CRTC2 Protein, fused to GST-tag, was expressed in E. coli. |
| Species | Human |
| Source | E.coli |
| Description | <p>This gene encodes a member of the transducers of regulated cAMP response element-binding protein activity family of transcription coactivators. These proteins promote the transcription of genes targeted by the cAMP response element-binding protein, and therefore play an important role in many cellular processes. Under basal conditions the encoded protein is phosphorylated by AMP-activated protein kinase or the salt-inducible kinases and is sequestered in the cytoplasm. Upon activation by elevated cAMP or calcium, the encoded protein translocates to the nucleus and increases target gene expression. Single nucleotide polymorphisms in this gene may increase the risk of type 2 diabetes. A pseudogene of this gene is located on the long arm of chromosome 5.</p> |
| Form | 50mM Tris, 20mM NaCl, pH 8.0. |
| Molecular Mass | 105 kDa |
| AA Sequence | <p>MSPILGYWKIKGLVQPTRLLEYLEEKYEEHLYERDEGDKWRNKKFELGLEFPNLPY YIDGDVKLTQSMAIIRYIADKHNMLGGCPKERAIEISMLEGAVLDIRYGVSR IAYSKD FE TLKVDFLSKLPEMLKMFEDRLCHKTYLNGDHVTHPDFMLYDALDVVLYMDPMCLDA FPKLVCFKKRIEAI PQIDKYLKSSKYIAWPLQG WQATFGGGDHPPKSDGSTSGSGHH</p> |

 Tel: 1-631-559-9269 1-516-512-3133

 Email: info@creative-biomart.com  Fax: 1-631-938-8127

 45-1 Ramsey Road, Shirley, NY 11967, USA

HHHSAGLVPRGSTAIGMKETAALKFERQHMDSPDLGTGGGSGDDDDKSPMATS
 GANGPGSATASASNPRKFSEKIALQKQRQAEETAFAFEEVMMDIGSTRLQAQKLRLA
 YTRSSHYGGSLPNVNQIGSGLAEFQSPLHSPLDSSRSTRHHGLVERVQRDPRRMV
 SPLRRYTRHIDSSPYSPAYLSPPESSWRRTMAWGNFPAEKGQLFRLPSALNRTSS
 DSALHTSVMNPSQDTPGTPPSILPSRRGGILDGEMDPKVAIEENLLDDKHLLK
 PWDAKKLSSSSSRPRSCEVPGINIFSPDQPANVPVLPPAMNTGGSLPDLTNLHFPP
 PLPTPLDPEETAYPSLSGGNSTSNLTHMTHLGISRGMGLPGYDAPGLHSPLSHP
 SLQSSLSNPNLQASLSSPQPQLQGSHSHPSLPASSLARHVLPTTSLGHPSLSAPALS
 SSSSSSTSSPVLGAPSYASTPGASPHHRRVPLSPLSLLAGPADARRSQQQLPKQ
 FSPTMSPTLSSITQGVPLDTSKLSTDQRLPPYPYSSPSLVLPTQPHTPKSLQQPGLP
 SQSCSVQSSGGQPPGRQSHYGTPYPPGPSGHGQQSYHRPMSDFNLGNLEQFSM
 ESPSASLVLDPPGFSEGGFLGGEGPMGGPQDPHTFNHQNLTHCSRHGSGPNIILT
 GDSSPGFSKEIAAALAGVPGFEVSAAGLELGLGLEDELMEPLGLEGLNMLSDPCAL
 LPDPAVEESFRSDRLQ

Purity >90% by SDS-PAGE

Storage Store it under sterile conditions at -20 to -80 centigrade. It is recommended that the protein be aliquoted for optimal storage. Avoid repeated freeze-thaw cycles.

Concentration 0.155 mg/mL

GENE INFORMATION

Gene Name [CRTC2 CREB regulated transcription coactivator 2 \[Homo sapiens \(human\) \]](#)

Official Symbol [CRTC2](#)

Synonyms TORC2; TORC-2

Gene ID [200186](#)

 Tel: 1-631-559-9269 1-516-512-3133

 Email: info@creative-biomart.com  Fax: 1-631-938-8127

 45-1 Ramsey Road, Shirley, NY 11967, USA

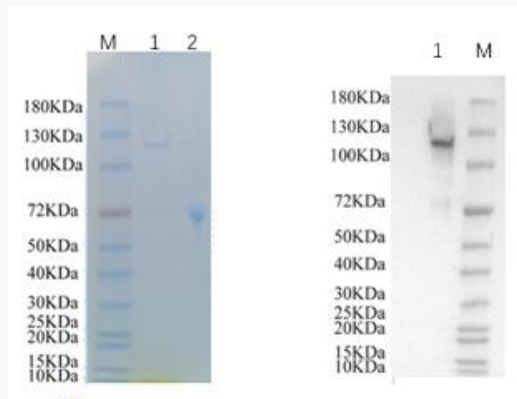
mRNA Refseq [NM_181715.3](#)

Protein Refseq [NP_859066.1](#)

MIM [608972](#)

UniProt ID [Q53ET0](#)

SDS-PAGE



Reducing 12% SDS-PAGE (CBB stained) and WB (Anti-His Mouse Monoclonal Antibody) analysis profiles of purified CRTC2.

 Tel: 1-631-559-9269 1-516-512-3133

 Email: info@creative-biomart.com  Fax: 1-631-938-8127

 45-1 Ramsey Road, Shirley, NY 11967, USA