

Recombinant Human CRTC2 protein, His-tagged

Cat. No. CRTC2-11593H **Lot. No.** (See product label)

SPECIFICATION

Product Overview	Recombinant Human CRTC2 protein is produced by E. coli-derived, PET28a expression system. This protein is fused with a His tag.
Species	Human
Source	E.coli
ProteinLength	394-693 aa
Form	The purified protein was Lyophilized from sterile PBS (58 mM Na ₂ HPO ₄ , 17 mM NaH ₂ PO ₄ , 68 mM NaCl, pH7.0). 5 % trehalose and 5 % mannitol are added as protectants before lyophilization.
AA Sequence	<p>APALSSSSSSSTSSPVLGAPSYASTPGASPHHRRVPLSPLSLLAGPADARRSQQ QLPKQFSPTMSPTLSSITQGVPLDTSKLDQRLPPYPYSSPSLVLPTQPHTPKSLQ QPGLPSQSCSVQSSGGQPPGRQSHYGTPYPPGPSGHGQQSYHRPMSDFNLGNLE QFSMESPSASLVLDPPGFSEGGPFLGGEGPMGGPQDPHTFNHQNLTHCSRHGSG PNIILTGDSSPGFSKEIAAALAGVPGFEVSAAGLELGLGLEDELRMEPLGLEGLNMLS DPCALLPDPAVEESFRSDRLQ</p>
Purity	> 85%, by SDS-PAGE with Coomassie Brilliant Blue staining.
Stability	Samples are stable for up to twelve months from date of receipt at -70 centigrade.
Storage	Store it under sterile conditions at -20 centigrade to -80 centigrade. It is

 Tel: 1-631-559-9269 1-516-512-3133

 Email: info@creative-biomart.com  Fax: 1-631-938-8127

 45-1 Ramsey Road, Shirley, NY 11967, USA

recommended that the protein be aliquoted for optimal storage. Avoid repeated freeze-thaw cycles.

Reconstitution

It is recommended that sterile water be added to the vial to prepare a stock solution of 0.2 ug/ul. Centrifuge the vial at 4°C before opening to recover the entire contents.

Shipping

The product is shipped at ambient temperature. Upon receipt, store it immediately at the recommended temperature.

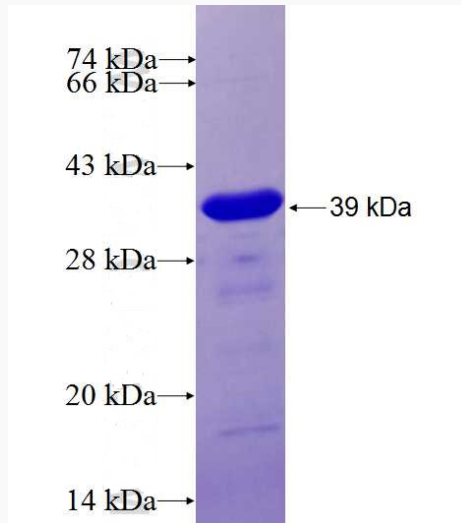
GENE INFORMATION

Gene Name	CRTC2 CREB regulated transcription coactivator 2 [Homo sapiens]
Official Symbol	CRTC2
Synonyms	CRTC2; CREB regulated transcription coactivator 2; TORC2; TORC-2;
Gene ID	200186
mRNA Refseq	NM_181715
Protein Refseq	NP_859066
MIM	608972
UniProt ID	Q53ET0

 Tel: 1-631-559-9269 1-516-512-3133

 Email: info@creative-biomart.com  Fax: 1-631-938-8127

 45-1 Ramsey Road, Shirley, NY 11967, USA



 Tel: 1-631-559-9269 1-516-512-3133

 Email: info@creative-biomart.com  Fax: 1-631-938-8127

 45-1 Ramsey Road, Shirley, NY 11967, USA