

## Recombinant Human CRTC2 Protein, GST tagged

Cat. No. CRTC2-12H Lot. No. (See product label)

### SPECIFICATION

**Product Overview** Recombinant Human CRTC2 Protein with GST tag was expressed in E. coli.

**Species** Human

**Source** E.coli

**Molecular Mass** The protein has a calculated MW of 105 kDa.

**AA Sequence**

MSPILGYWKIKGLVQPTRLLEYLEEKYEEHLYERDEGDKWRNKKFELGLEFPNLPY  
 YIDGDVKLTQSMAIIRYIADKHNMLGGCPKERAEISMLEGAVLDIRYGVSR IAYSKD FE  
 TLKVDFLSKLPEMLKMFEDRLCHKTYLNGDHVTHPDFMLYDALDVVLYMDPMCLDA  
 FPKLVCFKKRIEAI PQIDKYLKSSKYIAWPLQG WQATFGGGDHPPKSDGSTSGSGHH  
 HHHHSAGLVPRGSTAIGMKETA AAKFERQHMDSPDLGTGGGSGDDDDKSPMATS  
 GANGPGSATASASNPRKFSEKIALQKQRQAEETA AFEEVMMDIGSTR LQAQKLRLA  
 YTRSSHYGGSLPNVNQIGSGLAEFQSPLHSP LDSSRSTRHHGLVERVQRDPRRMV  
 SPLRRYTRHIDSSPYSPAYLSP PPESSWRRTMAWGNFPAEKGQLFRLPSALNRTSS  
 DSALHTSVMNPSPQDTPGPTPPSILPSRRGGILDGEMDPKVAIEENLLDDKHLLK  
 PWD AKKLSSSSSRPRSCEVPGINIFSPDQ PANVPVLP PAMNTGGSLPDLTNLHFPP  
 PLPTPLDPEETAYPSLSGGNSTSNLTH TMTHLGISRGMGLPGYDAPGLHSPLSHP  
 SLQSSLSNPNLQASLSSPQPQLQGSHSHP SLPASSLARHVLPTTSLGHPSLSAPALS  
 SSSSSSTSSPVLGAPSY PASTPGASPHHRRVPLSPLSLLAGPADARRSQQQLPKQ  
 FSPTMSPTLSSITQGVPLDTSK LSTDQRLPPYPYSSPSLVLP TQPHTPKSLQQPGLP  
 SQSCSVQSSGGQPPGRQSHYGT PYPGPGSGHGQQSYHRPMSDFNLGNLEQFSM  
 ESPSASLVLDPPGFSEGPGFLGGEGPMGGPQDPHTFNHQNLTHCSRHGSGPNIILT

 Tel: 1-631-559-9269 1-516-512-3133

 Email: [info@creative-biomart.com](mailto:info@creative-biomart.com)  Fax: 1-631-938-8127

 45-1 Ramsey Road, Shirley, NY 11967, USA

GDSSPGFSKEIAAALAGVPGFEVSAAGLELGLGLEDELRLMEPLGLEGLNMLSDPCAL  
LPDPAVEESFRSDRLQ

**Purity** > 90% by SDS-PAGE

**Storage** Store it under sterile conditions at -20 to -80 centigrade. It is recommended that the protein be aliquoted for optimal storage. Avoid repeated freeze-thaw cycles.

**Concentration** 0.155 mg/mL

**Storage Buffer** 50 mM Tris, 20 mM NaCl, pH 8.0

## GENE INFORMATION

**Gene Name** [CRTC2 CREB regulated transcription coactivator 2 \[ Homo sapiens \]](#)

**Official Symbol** [CRTC2](#)

**Synonyms** CRTC2; CREB regulated transcription coactivator 2; CREB-regulated transcription coactivator 2; TORC2; transducer of regulated cAMP response element-binding protein (CREB) 2; TORC-2;

**Gene ID** [200186](#)

**mRNA Refseq** [NM\\_181715](#)

**Protein Refseq** [NP\\_859066](#)

**MIM** [608972](#)

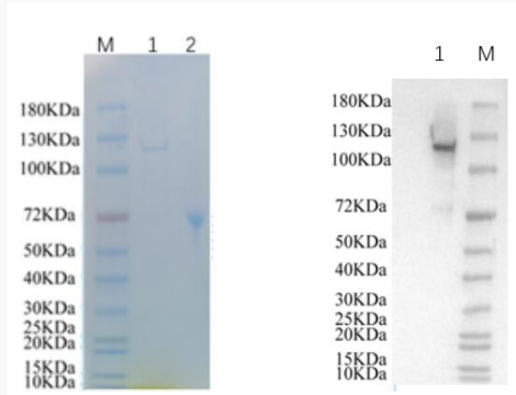
**UniProt ID** [Q53ET0](#)

 Tel: 1-631-559-9269 1-516-512-3133

 Email: [info@creative-biomart.com](mailto:info@creative-biomart.com)  Fax: 1-631-938-8127

 45-1 Ramsey Road, Shirley, NY 11967, USA

**Reducing 12% SDS-  
PAGE (CBB stained)  
and WB (Anti-His  
Mouse Monoclonal  
Antibody) analysis  
profile of purified  
CRTC2**



1. CRTC2
2. BSA

 Tel: 1-631-559-9269 1-516-512-3133

 Email: [info@creative-biomart.com](mailto:info@creative-biomart.com)  Fax: 1-631-938-8127

 45-1 Ramsey Road, Shirley, NY 11967, USA