

Recombinant Human CRTC2 Protein, GST-tagged

Cat. No. CRTC2-1918H Lot. No. (See product label)

SPECIFICATION

Product Overview	Human CRTC2 full-length ORF (NP_859066.1, 1 a.a. - 693 a.a.) recombinant protein with GST-tag at N-terminal.
Species	Human
Source	Wheat Germ
Description	This gene encodes a member of the transducers of regulated cAMP response element-binding protein activity family of transcription coactivators. These proteins promote the transcription of genes targeted by the cAMP response element-binding protein, and therefore play an important role in many cellular processes. Under basal conditions the encoded protein is phosphorylated by AMP-activated protein kinase or the salt-inducible kinases and is sequestered in the cytoplasm. Upon activation by elevated cAMP or calcium, the encoded protein translocates to the nucleus and increases target gene expression. Single nucleotide polymorphisms in this gene may increase the risk of type 2 diabetes. A pseudogene of this gene is located on the long arm of chromosome 5. [provided by RefSeq, Dec 2010]
Molecular Mass	99.7 kDa
AA Sequence	MATSGANGPGSATASASNPRKFSEKIALQKQRQAEETAAFEEVMMDIGSTRLQAQK LRLAYTRSSHYGGSLPNVNQIGSGLAEFQSPLHSPLDSSRSTRHHGLVERVQRDPR RMVSPLRRYTRHIDSSPYSPAYLSPPPPESSWRRTMAWGNFPAEKGQLFRLPSALN RTSSDSALHTSVMNPSPQDTYPGPTPPSILPSRRGGILDGEMDPKVPAlEENLLDDK

 Tel: 1-631-559-9269 1-516-512-3133

 Email: info@creative-biomart.com  Fax: 1-631-938-8127

 45-1 Ramsey Road, Shirley, NY 11967, USA

HLLKPWDAKKLSSSSSRPRSCEVPGINIFSPDQPANVPVLPPAMNTGGSLPDLTNL
 HFPPPLPTPLDPEETAYPSLSGGNSTSNLTHMTHLGISRGMGLGPGYDAPGLHSP
 LSHPSLQSSLSNPNLQASLSSPQPQLQGSHSHPSLPASSLARHVLPTTSLGHPSLSA
 PALSSSSSSSTSSPVLGAPSYASTPGASPHHRRVPLSPLSLLAGPADARRSQQQ
 LPKQFSPTMSPTLSSITQGVPLDTSKLDQRLPPYPYSSPSLVLPHTPKSLQQ
 PGLPSQSCSVQSSGGQPPGRQSHYGTYPYPPGPSGHGQQSYHRPMSDFNLGNLEQ
 FSMESPSASLVLDPPGFSEGGFLGGEGPMGGPQDPHTFNHQLNTHCSRHGSGP
 NIILTDSSPGFSKEIAAALAGVPGFEVSAAGLELGLGLEDELMEPLGLEGLNMLSD
 PCALLPDPAVEESFRSDRLQ

Applications
 Enzyme-linked Immunoabsorbent Assay
 Western Blot (Recombinant protein)
 Antibody Production
 Protein Array

Notes Best use within three months from the date of receipt of this protein.

Storage Store at -80 centigrade. Aliquot to avoid repeated freezing and thawing.

Storage Buffer 50 mM Tris-HCl, 10 mM reduced Glutathione, pH=8.0 in the elution buffer.

GENE INFORMATION

Gene Name [CRTC2 CREB regulated transcription coactivator 2 \[Homo sapiens \]](#)

Official Symbol [CRTC2](#)

Synonyms CRTC2; CREB regulated transcription coactivator 2; CREB-regulated transcription coactivator 2; TORC2; transducer of regulated cAMP response element-binding protein (CREB) 2; TORC-2;

 Tel: 1-631-559-9269 1-516-512-3133

 Email: info@creative-biomart.com  Fax: 1-631-938-8127

 45-1 Ramsey Road, Shirley, NY 11967, USA

Gene ID 200186

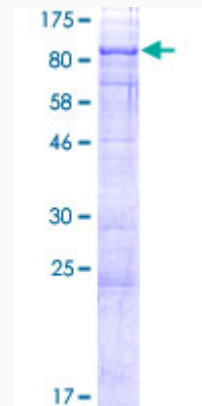
mRNA Refseq NM_181715

Protein Refseq NP_859066

MIM 608972

UniProt ID Q53ET0

Quality Control
Testing:



12.5% SDS-PAGE Stained with Coomassie Blue.

Tel: 1-631-559-9269 1-516-512-3133

Email: info@creative-biomart.com Fax: 1-631-938-8127

45-1 Ramsey Road, Shirley, NY 11967, USA