

Recombinant Human CRT3 Protein (Met1-Phe103), N-GST tagged

Cat. No. CRT3-2207H Lot. No. (See product label)

SPECIFICATION

Product Overview	Recombinant human CRT3 (Met1-Phe103) fused with N-GST tag was expressed in E. coli.
Species	Human
Source	E.coli
ProteinLength	Met1-Phe103
Form	Lyophilized powder/frozen liquid
Molecular Mass	38.51 kDa
Purity	>90% as determined by SDS-PAGE
Notes	For research use only.
Storage	Use a manual defrost freezer and avoid repeated freeze thaw cycles. Store at 2 to 8 centigrade for one week. Store at -20 to -80 centigrade for twelve months from the date of receipt.
Storage Buffer	0.01M PBS, pH 7.4, 0.02% NLS
Reconstitution	Reconstitute in sterile water for a stock solution.

 Tel: 1-631-559-9269 1-516-512-3133

 Email: info@creative-biomart.com  Fax: 1-631-938-8127

 45-1 Ramsey Road, Shirley, NY 11967, USA

Shipping They are shipped out with dry ice/blue ice unless customers require otherwise.

GENE INFORMATION

Gene Name [CRTC3 CREB regulated transcription coactivator 3 \[Homo sapiens \(human\) \]](#)

Official Symbol [CRTC3](#)

Synonyms CRTC3; CREB regulated transcription coactivator 3; CREB-regulated transcription coactivator 3; FLJ21868; TORC-3; transducer of CREB protein 3; transducer of regulated CREB protein 3; transducer of regulated cAMP response element-binding protein 3; transducer of regulated cAMP response element-binding protein (CREB) 3; TORC3;

Gene ID [64784](#)

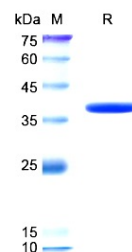
mRNA Refseq [NM_001042574](#)

Protein Refseq [NP_001036039](#)

MIM [608986](#)

UniProt ID [Q6UUV7](#)

SDS-PAGE



 Tel: 1-631-559-9269 1-516-512-3133

 Email: info@creative-biomart.com  Fax: 1-631-938-8127

 45-1 Ramsey Road, Shirley, NY 11967, USA