

## Recombinant Human CRX Protein, His-tagged

**Cat. No.** CRX-001H    **Lot. No.** (See product label)

### SPECIFICATION

<b>Product Overview</b>	Recombinant Human CRX Protein, His-tagged, expressed in E.coli.
<b>Species</b>	Human
<b>Source</b>	E.coli
<b>Protein Length</b>	166-299 aa
<b>Tag</b>	C-His
<b>Molecular Mass</b>	15 kDa
<b>AA Sequence</b>	MASESPLPEAQRAGLVASGPSLTSAPYAMTYAPASAFCSPPSAYGSPSSYFSGLDP YLSPMVPQLGGPALSPLSGPSVGP SLAQSP TSLSGQSYGAYSPVDSLEFKDPTGTW KFTYNPMDPLDYKDQSAWK FQILHHHHHHHH
<b>Purity</b>	>80% by SDS-PAGE
<b>Storage</b>	Store it under sterile conditions at -20 to -80 °C. It is recommended that the protein be aliquoted for optimal storage. Avoid repeated freeze-thaw cycles.
<b>Concentration</b>	1mg/ml by BCA
<b>Storage Buffer</b>	Sterile PBS, pH 7.4, 10% Glycerol, 5% Trehalose

 Tel: 1-631-559-9269    1-516-512-3133

 Email: [info@creative-biomart.com](mailto:info@creative-biomart.com)     Fax: 1-631-938-8127

 45-1 Ramsey Road, Shirley, NY 11967, USA

**GeneID** 1406

## GENE INFORMATION

**Gene Name** CRX cone-rod homeobox [ Homo sapiens (human) ]

**Official Symbol** CRX

**Synonyms** CRX; cone-rod homeobox; CORD2; cone-rod homeobox protein; CRD; LCA7; orthodenticle homeobox 3; OTX3

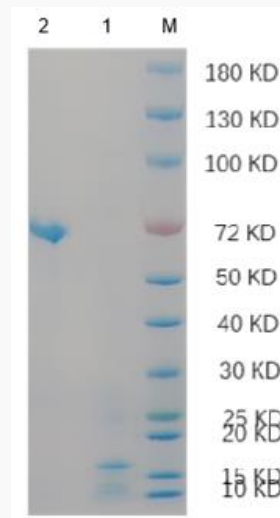
**mRNA Refseq** NM\_000554

**Protein Refseq** NP\_000545

**MIM** 602225

**UniProt ID** O43186

**Reducing 4%-20% SDS-PAGE (CBB stained) analysis profiles of purified CRX-001H**



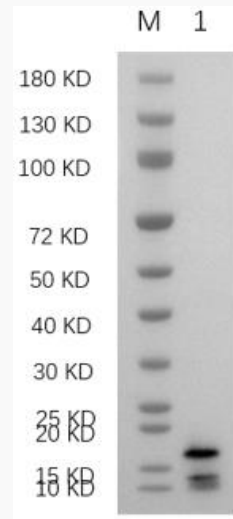
 Tel: 1-631-559-9269 1-516-512-3133

 Email: [info@creative-biomart.com](mailto:info@creative-biomart.com)  Fax: 1-631-938-8127

 45-1 Ramsey Road, Shirley, NY 11967, USA

1. CRX-001H  
2. BSA

**WB (Anti-His Mouse  
Monoclonal  
antibody) analysis  
profiles of purified  
CRX-001H**



WB

 Tel: 1-631-559-9269 1-516-512-3133

 Email: [info@creative-biomart.com](mailto:info@creative-biomart.com)  Fax: 1-631-938-8127

 45-1 Ramsey Road, Shirley, NY 11967, USA