

## Recombinant Human CRX Protein, GST-tagged

**Cat. No.** CRX-1919H    **Lot. No.** (See product label)

### SPECIFICATION

**Product Overview**      Human CRX full-length ORF ( AAH16664, 1 a.a. - 299 a.a.) recombinant protein with GST-tag at N-terminal.

**Species**                      Human

**Source**                        Wheat Germ

**Description**                The protein encoded by this gene is a photoreceptor-specific transcription factor which plays a role in the differentiation of photoreceptor cells. This homeodomain protein is necessary for the maintenance of normal cone and rod function. Mutations in this gene are associated with photoreceptor degeneration, Leber congenital amaurosis type III and the autosomal dominant cone-rod dystrophy 2. Several alternatively spliced transcript variants of this gene have been described, but the full-length nature of some variants has not been determined. [provided by RefSeq, Jul 2008]

**Molecular Mass**            58.63 kDa

**AA Sequence**                MMAYMNPGRAPHYSVNALALSGPSVDLMHQAVPYPSAPRKQRRERTTFTRSQLEELE  
ALFAKTQYPDVYAREEVALKINLPESRVQVWFKNRRRAKCRQQRQQKQQQPPG  
GQAKARPAKRKAGTSPRPSTDVCPDPLGISDSYSPPLPGPSGSPPTTAVATVSIWSP  
ASESPLPEAQRAGLVASGPSLTSAPYAMTYAPASAFCSPPSAYGSPSSYFSGLDPY  
LSPMVPQLGGPALSPLSGPSVGPVSLAQSPVSLSGQSYGAYSPVDSLEFKDPTGTWK  
FTYNPMDPLDYKDQSAWKFQIL

 Tel: 1-631-559-9269    1-516-512-3133

 Email: [info@creative-biomart.com](mailto:info@creative-biomart.com)     Fax: 1-631-938-8127

 45-1 Ramsey Road, Shirley, NY 11967, USA

<b>Applications</b>	Enzyme-linked Immunoabsorbent Assay Western Blot (Recombinant protein) Antibody Production Protein Array
<b>Notes</b>	Best use within three months from the date of receipt of this protein.
<b>Storage</b>	Store at -80 centigrade. Aliquot to avoid repeated freezing and thawing.
<b>Storage Buffer</b>	50 mM Tris-HCl, 10 mM reduced Glutathione, pH=8.0 in the elution buffer.
<b>GENE INFORMATION</b>	
<b>Gene Name</b>	CRX cone-rod homeobox [ Homo sapiens ]
<b>Official Symbol</b>	CRX
<b>Synonyms</b>	CRX; cone-rod homeobox; CORD2; cone-rod homeobox protein; CRD; LCA7; orthodenticle homeobox 3; OTX3;
<b>Gene ID</b>	1406
<b>mRNA Refseq</b>	NM_000554
<b>Protein Refseq</b>	NP_000545
<b>MIM</b>	602225
<b>UniProt ID</b>	O43186

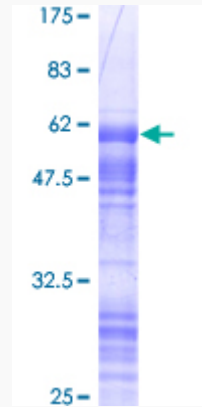
 Tel: 1-631-559-9269 1-516-512-3133

 Email: [info@creative-biomart.com](mailto:info@creative-biomart.com)  Fax: 1-631-938-8127

 45-1 Ramsey Road, Shirley, NY 11967, USA

**Quality Control**

**Testing:**



12.5% SDS-PAGE Stained with Coomassie Blue.

 Tel: 1-631-559-9269 1-516-512-3133

 Email: [info@creative-biomart.com](mailto:info@creative-biomart.com)  Fax: 1-631-938-8127

 45-1 Ramsey Road, Shirley, NY 11967, USA